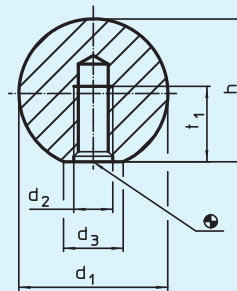


EH 24561.

Kugelknöpfe

Metallausführungen
ähnlich DIN 319



Werkstoff:

- Stahl, poliert, blank
- Rostfreier Stahl 1.4305, matt gestrahlt
- Aluminium, poliert

Hinweis:

Erweiterung DIN 319 Form C um metallische Ausführungen.

| Best.-Nr. | Ausführung | d ₁ | d ₂ | d ₃ | h | t ₁ min. | g |
|------------|------------------|----------------|----------------|----------------|------|------------------------|-----|
| 24561.0016 | Stahl | 16 | M 4 | 8 | 15,0 | 7,0 | 16 |
| 24561.0020 | | 20 | M 5 | 12 | 18,0 | 9,0 | 26 |
| 24561.0025 | | 25 | M 6 | 15 | 22,5 | 11,0 | 58 |
| 24561.0032 | | 32 | M 8 | 18 | 29,0 | 14,5 | 116 |
| 24561.0040 | | 40 | M 10 | 22 | 37,0 | 18,0 | 241 |
| 24561.0050 | | 50 | M 12 | 27 | 46,0 | 21,0 | 475 |
| 24561.0216 | rostfreier Stahl | 16 | M 4 | 8 | 15,0 | 7,0 | 16 |
| 24561.0220 | | 20 | M 5 | 12 | 18,0 | 9,0 | 31 |
| 24561.0225 | | 25 | M 6 | 15 | 22,5 | 11,0 | 59 |
| 24561.0232 | | 32 | M 8 | 18 | 29,0 | 14,5 | 122 |
| 24561.0240 | | 40 | M 10 | 22 | 37,0 | 18,0 | 242 |
| 24561.0116 | Aluminium | 16 | M 4 | 8 | 15,0 | 7,0 | 7 |
| 24561.0120 | | 20 | M 5 | 12 | 18,0 | 9,0 | 12 |
| 24561.0125 | | 25 | M 6 | 15 | 22,5 | 11,0 | 22 |
| 24561.0132 | | 32 | M 8 | 18 | 29,0 | 14,5 | 44 |
| 24561.0140 | | 40 | M 10 | 22 | 37,0 | 18,0 | 87 |
| 24561.0150 | | 50 | M 12 | 27 | 46,0 | 21,0 | 173 |

