

# Reduziernippel, kurze Ausführung, zylindrisch, Messing

Messing

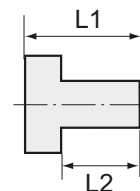
Arbeitsdruck max.	25 bar
Betriebstemperatur max.	150 °C
Material	Messing CW614N

## Reduziernippel

Messing

### Reduziernippel, kurze Ausführung, zylindrisch

Artikel Nr.	Typen Nr.	Außen- gewinde	Innen- gewinde	L1 mm	L2 mm	SW mm	Preis €
134441	MS251K1418	G 1/4	G 1/8	14,0	9,0	17	0,76
134442	MS251K3818	G 3/8	G 1/8	14,0	9,0	19	0,90
134443	MS251K3814	G 3/8	G 1/4	14,0	9,0	19	0,91
134444	MS251K1218	G 1/2	G 1/8	17,0	11,0	24	1,54
134445	MS251K1214	G 1/2	G 1/4	17,0	11,0	24	1,56
134446	MS251K1238	G 1/2	G 3/8	17,0	11,0	24	1,60
134447	MS251K3414	G 3/4	G 1/4	18,0	12,0	32	2,52
134448	MS251K3438	G 3/4	G 3/8	18,0	12,0	32	2,59
134449	MS251K3412	G 3/4	G 1/2	18,0	12,0	32	2,61
134450	MS251K112	G 1	G 1/2	19,0	13,0	38	4,19
134451	MS251K134	G 1	G 3/4	19,0	13,0	38	4,50
134452	MS251K11434	G 1 1/4	G 3/4	21,0	14,0	50	8,53
134453	MS251K1141	G 1 1/4	G 1	21,0	14,0	50	9,36
134455	MS251K11234	G 1 1/2	G 3/4	23,0	15,0	55	10,23
134456	MS251K1121	G 1 1/2	G 1	23,0	15,0	55	19,50
134457	MS251K112114	G 1 1/2	G 1 1/4	23,0	15,0	55	19,80
134458	MS251K21	G 2	G 1	28,0	20,0	70	26,33
134459	MS251K2114	G 2	G 1 1/4	28,0	20,0	70	27,79
134460	MS251K2112	G 2	G 1 1/2	28,0	20,0	70	29,61
134461	MS251K212112	G 2 1/2	G 1 1/2	32,0	23,0	80	37,08
134462	MS251K2122	G 2 1/2	G 2	32,0	23,0	80	78,00
134463	MS251K31	G 3	G 1	36,0	26,0	95	76,23
134464	MS251K3114	G 3	G 1 1/4	36,0	26,0	95	78,01
134465	MS251K3112	G 3	G 1 1/2	36,0	26,0	95	79,20
134466	MS251K32	G 3	G 2	36,0	26,0	95	80,73
134467	MS251K3212	G 3	G 2 1/2	36,0	26,0	95	81,24



MS251K1418

### Reduziernippel, kurze Ausführung

Artikel Nr.	Typen Nr.	Außen- gewinde	Innen- gewinde	L1 mm	L2 mm	SW mm	Preis €
134468	MS251KM53	M5	M3	8,0	5,0	7	1,19
134469	MS251KM1410	M14x1,5	M10x1,0	14,0	9,0	17	1,54
134470	MS251KM2416	M24x1,5	M16x1,5	24,0	16,0	28	5,02
134471	MS251K18M5	G 1/8	M5	11,0	7,0	14	0,60
134472	MS251K14M5	G 1/4	M5	14,0	9,0	17	0,86



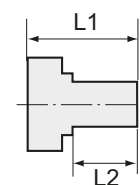
MS251K14M5

## Reduziernippel

Messing

### Reduziernippel, lange Ausführung, zylindrisch

Artikel Nr.	Typen Nr.	Außen- gewinde	Innen- gewinde	L1 mm	L2 mm	SW mm	Preis €
134680	MS251L1818	G 1/8	G 1/8	19,0	7,0	14	1,21
134681	MS251L1814	G 1/8	G 1/4	23,0	7,0	17	1,33
134682	MS251L1418	G 1/4	G 1/8	22,0	9,0	17	1,53



MS251L1418