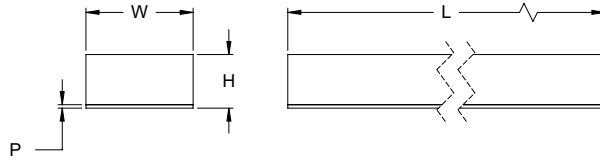
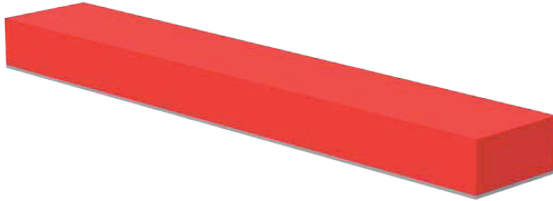


NEST PAD BLOCKS

Round Tooling | Dimensions | Technical Specifications

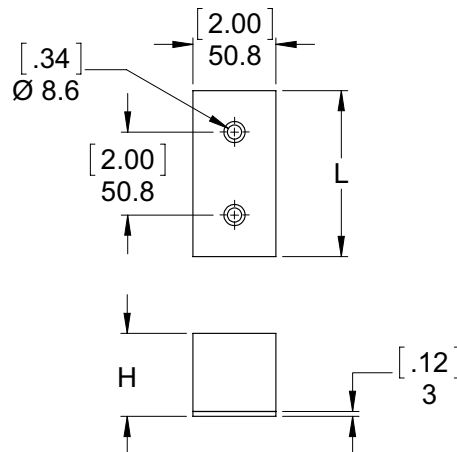
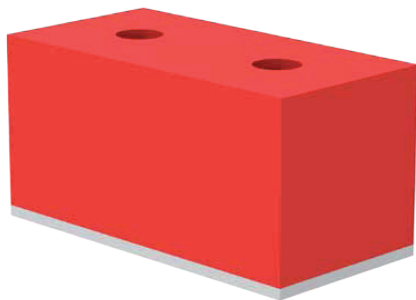
Bar Stock Urethane



CPI - BS - [] - [] - [] - 24 Length L 24 24.00" 609.6 mm

Base Model BS	Height H	Backing Plate Height P	Width W
Bar Stock Urethane	1 1.00" 25.4 mm	1/8 0.13" 3.2 mm	1 1.00" 25.4 mm
	2 2.00" 50.8 mm	1/4 0.25" 6.4 mm	2 2.00" 50.8 mm
	3 3.00" 76.2 mm	3/8 0.38" 9.6 mm	3 3.00" 76.2 mm
	4 4.00" 101.6 mm	1/2 0.50" 12.7 mm	4 4.00" 101.6 mm
	5 5.00" 127 mm	1 1.00" 25.4 mm	
	6 6.00" 152.4 mm		

Urethane Pads



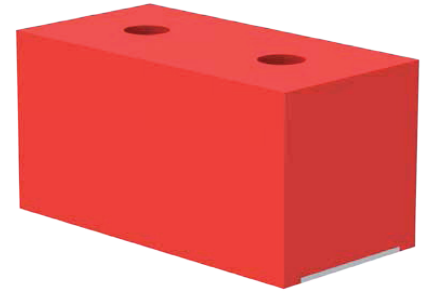
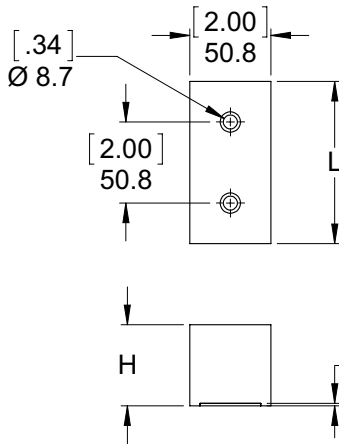
Model	"H"	"L"	Weight
CPI-UT-1-4-85	1.00"(in)	4.00"(in)	9oz. [255g]
CPI-UT-2-4-85	2.00"(in)	4.00"(in)	14oz. [397g]
CPI-UT-2-6-85	2.00"(in)	6.00"(in)	19oz. [539g]

Dimensions and technical information are subject to change without notice

NEST PAD BLOCKS

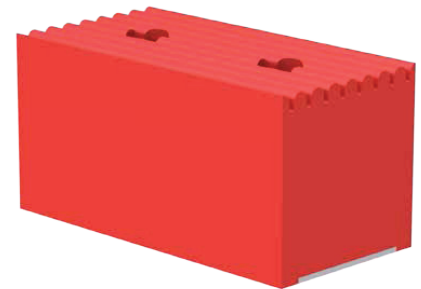
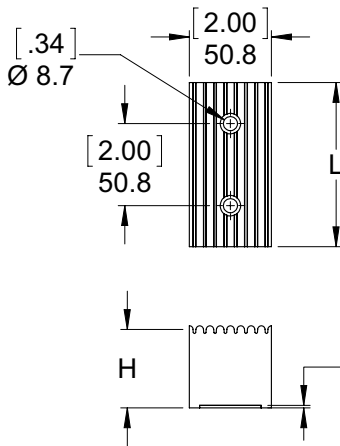
Round Tooling | Dimensions | Technical Specifications

Smooth Pads Neoprene



Base Model ST	Height H	Length L			Durometer D	
Smooth	1/2	0.50"	12.7 mm	4	4.00" 101.6 mm	15 Shore A Tan
Top Pads	1	1.00"	25.4 mm	6	6.00" 152.4 mm	30 Shore A Teal
Neoprene	2	2.00"	50.8 mm	8	8.00" 203.2 mm	45 Shore A Red
	3	3.00"	76.2 mm	12	12.00" 304.8 mm	60 Shore A Black
	4	4.00"	101.6 mm			

Ribbed Pads Neoprene



Base Model RT	Height H	Length L			Durometer D	
Ribbed Pads	1/2	0.50"	12.7 mm	4	4.00" 101.6 mm	15 Shore A Tan
Neoprene	1	1.00"	25.4 mm	6	6.00" 152.4 mm	30 Shore A Teal
	2	2.00"	50.8 mm	8	8.00" 203.2 mm	45 Shore A Red
	3	3.00"	76.2 mm	12	12.00" 304.8 mm	60 Shore A Black
	4	4.00"	101.6 mm			

Dimensions and technical information are subject to change without notice