

MICRO TOOLING SWIVEL ARMS

Round Tooling | Dimensions | Technical Specifications

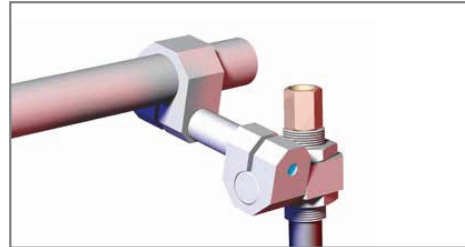
Features:

- Mounts micro apple core accessories to Ø20mm/.75" Round tube.
- Provides 360° of rotational adjustments along (3) axes.
- Used to mount venturi, bumpers, round locators, and proximity switches.

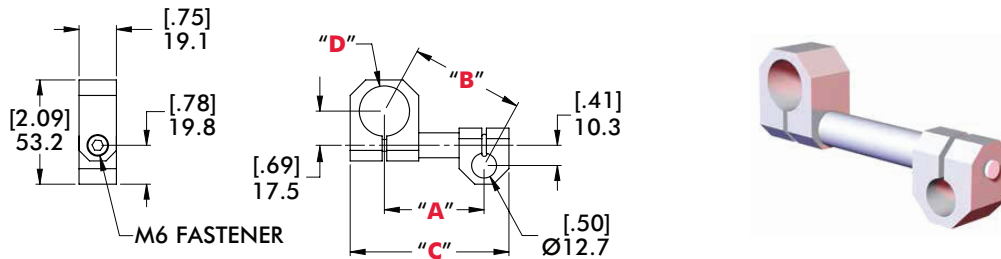
Specifications:

Maximum Clamp Load:
120 ft-lb [163 Nm]
 Material:
 Body and Spacer:
Machined Aluminum

Nominal (Ø) given
 See chart on Page 72
 for actual (Ø) size



MSA Ø20mm/.75" for Ø12.7mm [.50"] Apple Core (Micro)



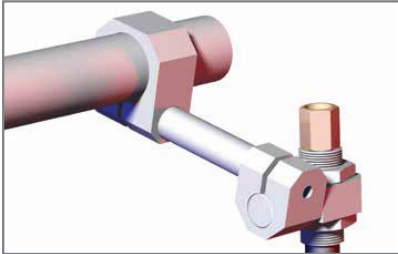
Model Number	(Ø)"D"	"A"	"B"	"C"	Weight
CPI-200-7550-MSA	.75"(in)	[2.00]	[2.28]	[3.19]	[0.16 lb]
CPI-200-20M50-MSA	20mm	50.8	57.9	81.0	0.07kg
CPI-300-7550-MSA	.75"(in)	[3.00]	[3.19]	[4.19]	[0.19 lb]
CPI-300-20M50-MSA	20mm	76.2	81.1	106.4	0.08kg
CPI-400-7550-MSA	.75"(in)	[4.00]	[4.15]	[5.19]	[0.21 lb]
CPI-400-20M50-MSA	20mm	101.7	105.4	131.9	0.09kg
CPI-500-7550-MSA	.75"(in)	[5.00]	[5.12]	[6.19]	[0.23 lb]
CPI-500-20M50-MSA	20mm	127.1	130.1	157.3	0.11kg
CPI-600-7550-MSA	.75"(in)	[6.00]	[6.10]	[7.19]	[0.26 lb]
CPI-600-20M50-MSA	20mm	152.5	155.0	182.7	0.12kg

Dimensions and technical information are subject to change without notice

MICRO TOOLING SWIVEL ARMS

Round Tooling | Dimensions | Technical Specifications

Nominal (Ø) given
See chart on Page 72
for actual (Ø) size



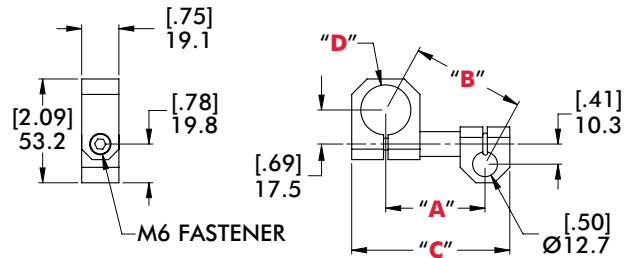
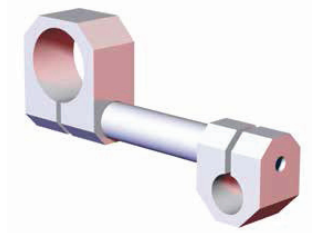
Features:

- Mounts micro apple core accessories to Ø25mm/1.00" Round tube
- Provides 360° of rotational adjustments along (3) axes
- Used to mount venturi, bumpers, round locators, and proximity switches

Specifications:

Maximum Clamp Load:
120 ft-lb [163 Nm]
Material:
Body and Spacer:
Machined Aluminum

MSA Ø25mm/1.00" for Ø12.7mm [.50"] Apple Core (Micro)



Model Number	(Ø)"D"	"A"	"B"	"C"	Weight
CPI-200-1050-MSA	1.00"(in)	[2.00]	[2.23]	[3.06]	[0.18 lb]
CPI-200-25M50-MSA	25mm	50.7	56.6	77.7	0.08kg
CPI-300-1050-MSA	1.00"(in)				
CPI-300-25M50-MSA	25mm	[3.00]	[3.16]	[4.11]	[0.21 lb]
CPI-300-30B50-MSA	30mm	76.1	80.2	104.4	0.09kg
CPI-400-1050-MSA	1.00"(in)				
CPI-400-25M50-MSA	25mm	[4.00]	[4.12]	[5.08]	[0.23 lb]
CPI-400-30B50-MSA	30mm	101.6	104.7	129.0	0.10kg
CPI-500-1050-MSA	1.00"(in)				
CPI-500-25M50-MSA	25mm	[5.00]	[5.10]	[6.14]	[0.25 lb]
CPI-500-30B50-MSA	30mm	127.0	129.5	156.0	0.11kg
CPI-600-1050-MSA	1.00"(in)				
CPI-600-25M50-MSA	25mm	[6.00]	[6.08]	[7.09]	[0.27 lb]
CPI-600-30B50-MSA	30mm	152.4	154.4	180.0	0.13kg

Dimensions and technical information are subject to change without notice