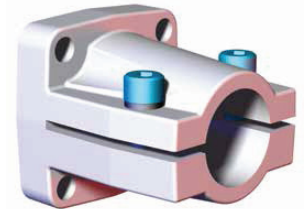
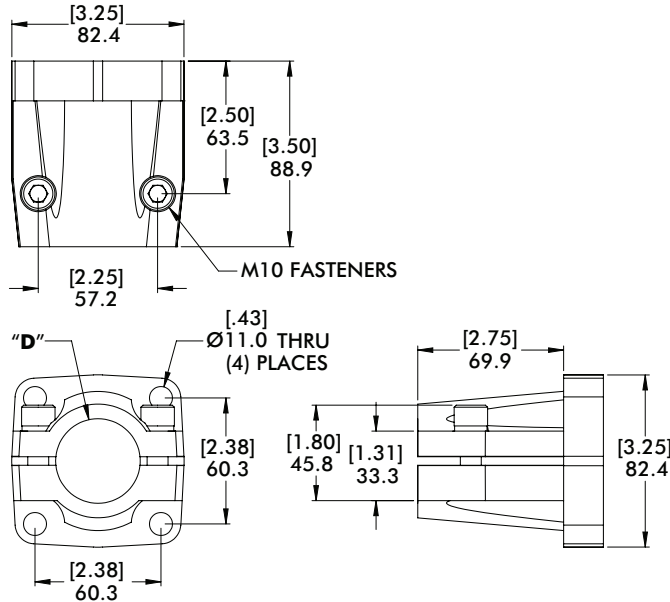


FLANGE END MOUNT BRACKET AND BLOCKS

Round Tooling | Dimensions | Technical Specifications

Nominal (Ø) given
See chart on Page 72
for actual (Ø) size

KL/CL End Flange Mount for Ø40mm/1.50" Tube

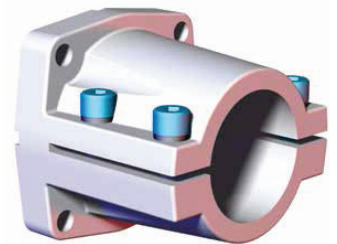
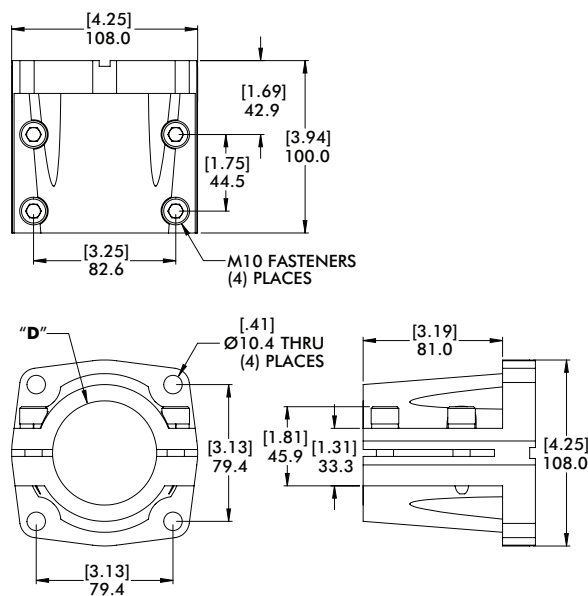


Specifications:

Max. Static Clamp Load:
203 N*m [150 ft-lb]
Material: Aluminum

Model Number	(Ø)"D"	Weight
CPI-KL-40-60F	40mm	[1.55 lb] .70 kg
CPI-CL-15-238F	1.50"(in)	[1.61 lb] .73 kg

KL/CL End Flange Mount for Ø60mm/2.50" Tube



Specifications:

Max. Static Clamp Load:
675 N*m [500 ft-lb]
Material: Aluminum

Model Number	(Ø)"D"	Weight
CPI-KL-60-78F	60mm	[2.73 lb] 1.24 kg
CPI-CL-25-312F	2.50"(in)	[2.52 lb] 1.14 kg

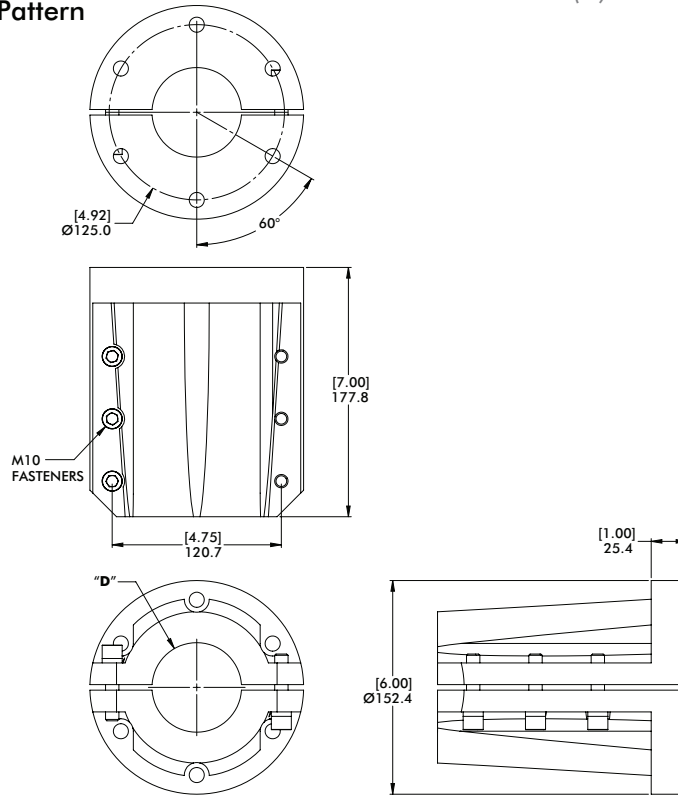
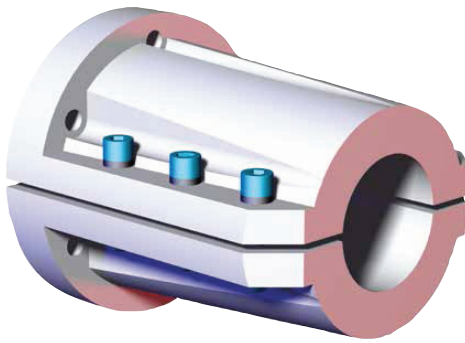
Dimensions and technical information are subject to change without notice

FLANGE END MOUNT BRACKET AND BLOCKS

Round Tooling | Dimensions | Technical Specifications

Nominal (Ø) given
See chart on Page 72
for actual (Ø) size

CL End Flange Mount with Ø125mm Bolt Pattern

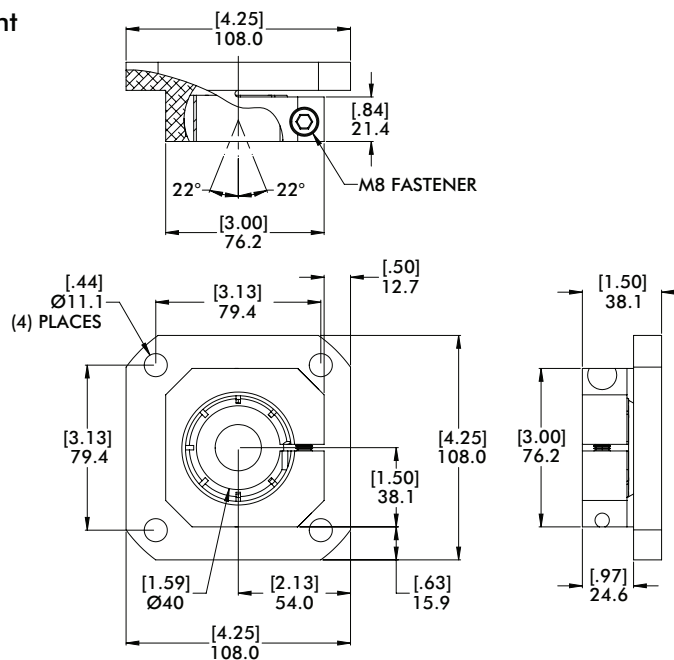
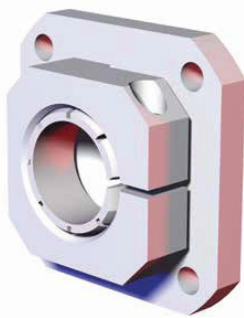


Specifications:

Max. Static Clamp Load:
746 N*m [550 ft-lb]
Material: Aluminum

Model Number	(Ø) "D"	Weight
CPI-CL-60-125F	60mm	[9.86 lb] 4.47 kg
CPI-CL-250-125F	2.50"(in)	[10.20 lb] 4.63 kg
CPI-CL-300-125F	3.00"(in)	[8.70 lb] 3.95 kg

RJM Ø40mm Spherical Flange End Mount



Specifications:

Max. Static Clamp Load:
203 N*m [150 ft-lb]
Material: Aluminum

Model Number	Weight
CPI-RJM-78F-40S	[1.54 lb] .70 kg

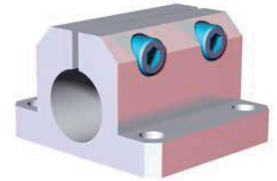
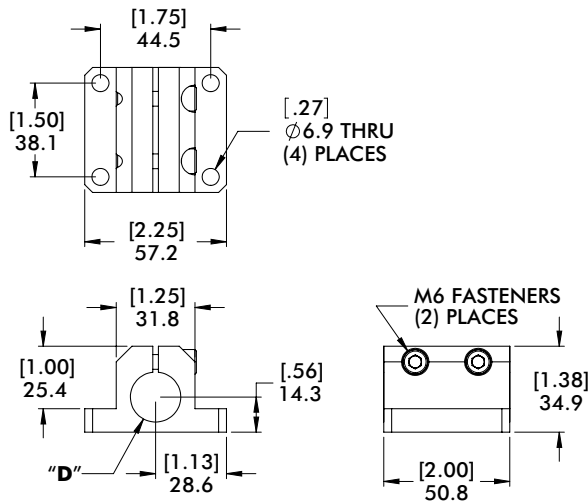
Dimensions and technical information are subject to change without notice

FLANGE MID MOUNT BRACKETS AND BLOCKS

Round Tooling | Dimensions | Technical Specifications

Nominal (Ø) given
See chart on Page 72
for actual (Ø) size

CLM-xxx-1517F-90 Mid Flange Mount for Ø20mm/0.75" Tube (Micro)

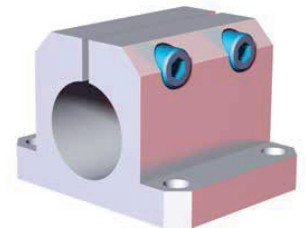
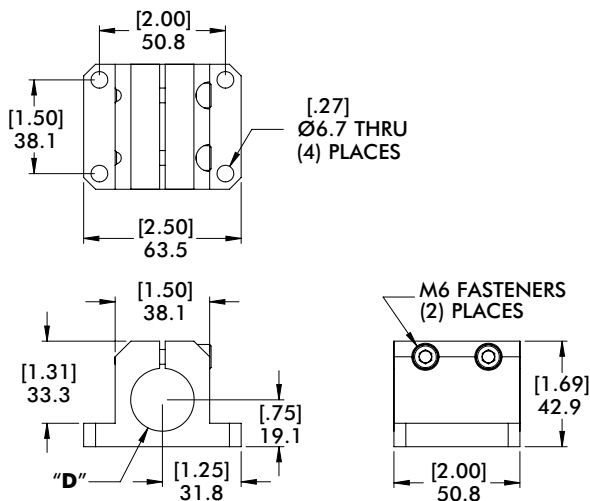


Specifications:

Max. Static Clamp Load:
47.5 N*m [35 ft-lb]
Material: Aluminum

Model Number	(Ø) "D"	Weight
CPI-CLM-20M-1517F-90	20mm	[.33 lb] .14 kg
CPI-CLM-75-1517F-90	.75"(in)	[.35 lb] .16 kg

CLM-xxx-152F-90 Mid Flange Mount for Ø25mm/1.00" Tube (Micro)



Specifications:

Max. Static Clamp Load:
81.4 N*m [60 ft-lb]
Material: Aluminum

Model Number	(Ø) "D"	Weight
CPI-CLM-25M-152F-90	25mm	[.41 lb] .19 kg
CPI-CLM-10-152F-90	1.00"(in)	

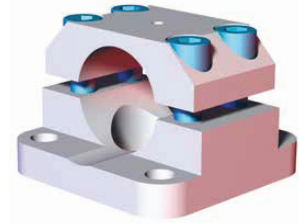
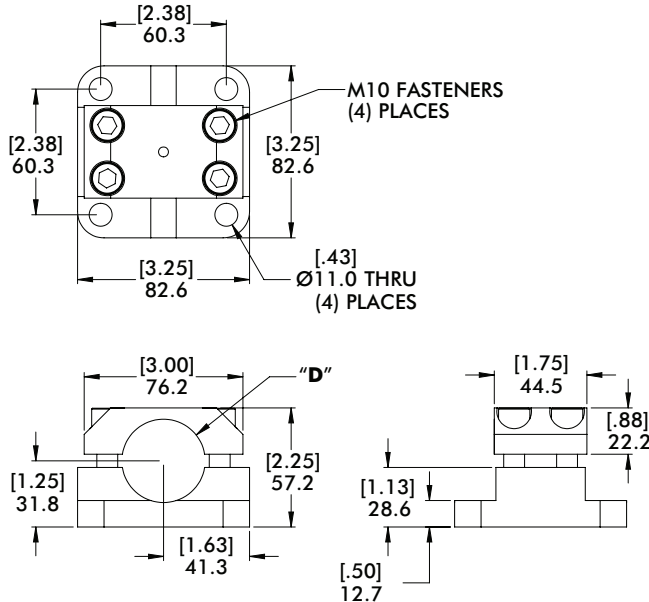
Dimensions and technical information are subject to change without notice

FLANGE MID MOUNT BRACKETS AND BLOCKS

Round Tooling | Dimensions | Technical Specifications

Nominal (Ø) given
See chart on Page 72
for actual (Ø) size

CL-xx-xxxF-90 Mid Flange Mount for Ø40mm/1.50" Tube

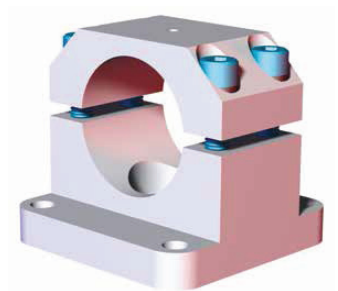
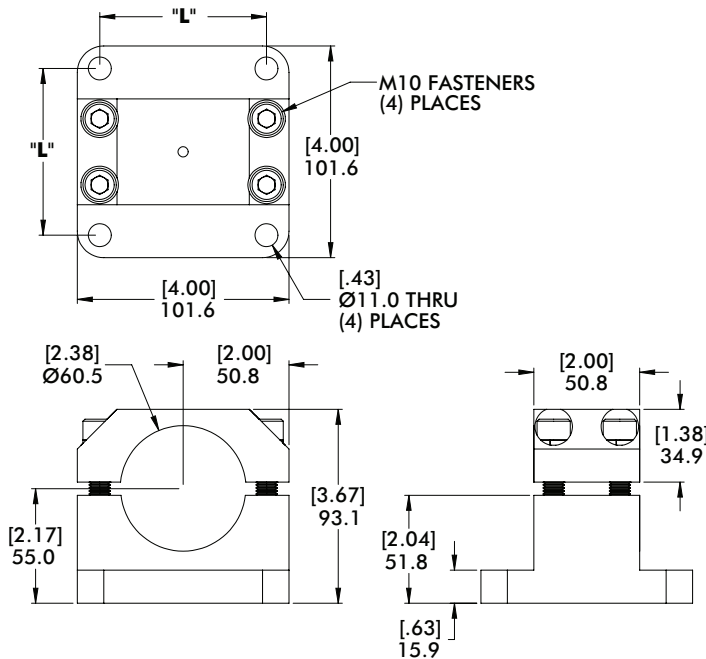


Specifications:

Max. Static Clamp Load:
475 N*m [350 ft-lb]
Material: Aluminum

Model Number	(Ø)"D"	Weight
CPI-KL-40-60F-90	40mm	[1.09 lb] .49 kg
CPI-CL-15-238F-90	1.50"(in)	[1.11 lb] .50 kg

KL-60-xxxF-90 Mid Flange Mount for Ø60mm Tube



Specifications:

Max. Static Clamp Load:
675 N*m [500 ft-lb]
Material: Aluminum

Model Number	"L"	Weight
CPI-KL-60-78F-90	[3.07] 78	[2.24 lb]
CPI-KL-60-80F-90	[3.15] 80	1.02 kg

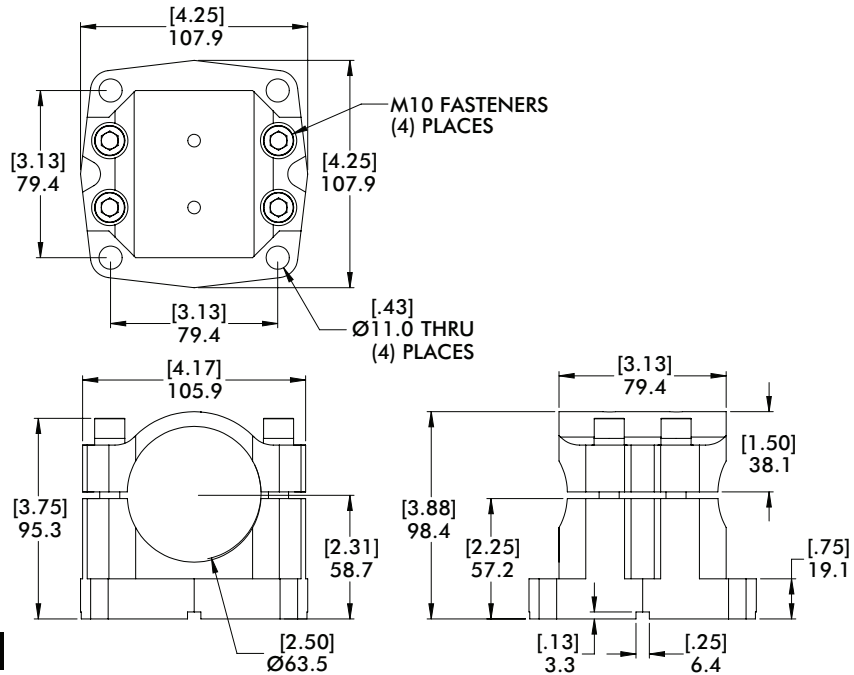
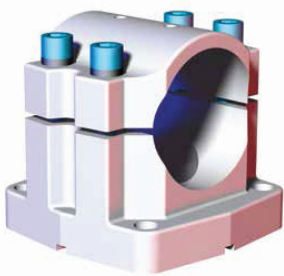
Dimensions and technical information are subject to change without notice

FLANGE MID MOUNT BRACKETS AND BLOCKS

Round Tooling | Dimensions | Technical Specifications

Nominal (Ø) given
See chart on Page 72
for actual (Ø) size

CL-25-312F-90 Mid Flange Mount for Ø2.50" Tube



Specifications:

Max. Static Clamp Load:

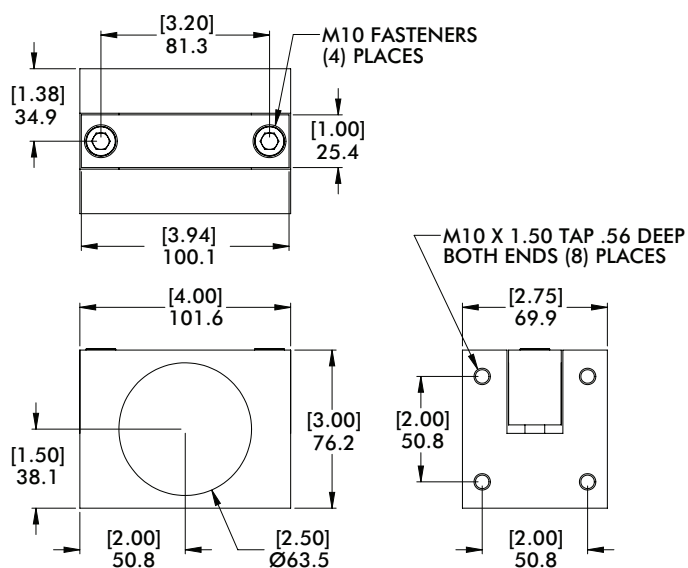
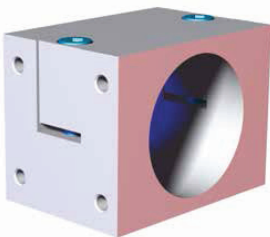
675 N*m [500 ft-lb]

Material: Aluminum

Model Number	Weight
CPI-CL-25-312F-90	[2.51 lb] 1.14 kg

World Tool Direct Mounts

CL-xx-DM-10F Direct Mount Bracket for 2.50" Tube



Material: Aluminum

Model Number	Weight
CPI-CL-25-DM-10F	[1.89 lb] .86 kg

Dimensions and technical information are subject to change without notice