

Artikelbeschreibung/Produktabbildungen



Beschreibung

Werkstoff:

Stopfen Thermoplast glasfaserverstärkt.
Gewindeeinsatz Messing.

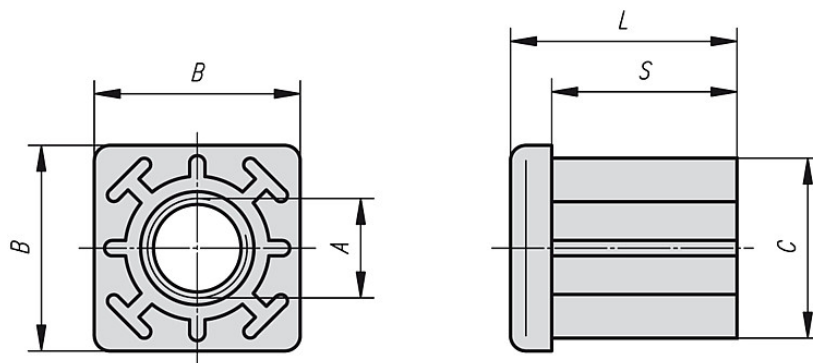
Ausführung:

Stopfen schwarz. Gewindeeinsatz vernickelt.

Hinweis:

Gewindestopfen werden zum einfachen Befestigen von Stell- und Gelenkfüßen an Vierkantrohren verwendet.

Zeichnungen



Artikelübersicht

| Bestellnummer | A | B | C | L | S | Passend zu Vierkantrohre | Belastbarkeit max. kN | Gewicht ca. kg |
|---------------|-----|----|------|----|----|--------------------------|-----------------------|----------------|
| K0430.103015 | M10 | 30 | 27,5 | 33 | 27 | 30 x 1,5 | 5 | 0,031 |
| K0430.123015 | M12 | 30 | 27,5 | 33 | 27 | 30 x 1,5 | 5 | 0,031 |
| K0430.143015 | M14 | 30 | 27,5 | 33 | 27 | 30 x 1,5 | 5 | 0,033 |
| K0430.163015 | M16 | 30 | 27,5 | 33 | 27 | 30 x 1,5 | 5 | 0,037 |
| K0430.103020 | M10 | 30 | 26,5 | 33 | 27 | 30 x 2 | 5 | 0,031 |
| K0430.123020 | M12 | 30 | 26,5 | 33 | 27 | 30 x 2 | 5 | 0,031 |
| K0430.143020 | M14 | 30 | 26,5 | 33 | 27 | 30 x 2 | 5 | 0,033 |
| K0430.163020 | M16 | 30 | 26,5 | 33 | 27 | 30 x 2 | 5 | 0,037 |
| K0430.104015 | M10 | 40 | 37,5 | 43 | 35 | 40 x 1,5 | 8 | 0,060 |
| K0430.124015 | M12 | 40 | 37,5 | 43 | 35 | 40 x 1,5 | 8 | 0,060 |
| K0430.144015 | M14 | 40 | 37,5 | 43 | 35 | 40 x 1,5 | 8 | 0,060 |
| K0430.164015 | M16 | 40 | 37,5 | 43 | 35 | 40 x 1,5 | 8 | 0,063 |
| K0430.204015 | M20 | 40 | 37,5 | 43 | 35 | 40 x 1,5 | 8 | 0,072 |
| K0430.104020 | M10 | 40 | 36,5 | 43 | 35 | 40 x 2 | 10 | 0,055 |
| K0430.124020 | M12 | 40 | 36,5 | 43 | 35 | 40 x 2 | 10 | 0,055 |
| K0430.144020 | M14 | 40 | 36,5 | 43 | 35 | 40 x 2 | 10 | 0,060 |
| K0430.164020 | M16 | 40 | 36,5 | 43 | 35 | 40 x 2 | 10 | 0,060 |
| K0430.204020 | M20 | 40 | 36,5 | 43 | 35 | 40 x 2 | 10 | 0,069 |
| K0430.104025 | M10 | 40 | 35,5 | 43 | 35 | 40 x 2,5 | 10 | 0,055 |
| K0430.124025 | M12 | 40 | 35,5 | 43 | 35 | 40 x 2,5 | 10 | 0,055 |
| K0430.144025 | M14 | 40 | 35,5 | 43 | 35 | 40 x 2,5 | 10 | 0,060 |
| K0430.164025 | M16 | 40 | 35,5 | 43 | 35 | 40 x 2,5 | 10 | 0,060 |
| K0430.204025 | M20 | 40 | 35,5 | 43 | 35 | 40 x 2,5 | 10 | 0,069 |
| K0430.104030 | M10 | 40 | 34,5 | 43 | 35 | 40 x 3 | 10 | 0,055 |
| K0430.124030 | M12 | 40 | 34,5 | 43 | 35 | 40 x 3 | 10 | 0,055 |
| K0430.144030 | M14 | 40 | 34,5 | 43 | 35 | 40 x 3 | 10 | 0,060 |
| K0430.164030 | M16 | 40 | 34,5 | 43 | 35 | 40 x 3 | 10 | 0,060 |
| K0430.204030 | M20 | 40 | 34,5 | 43 | 35 | 40 x 3 | 10 | 0,069 |
| K0430.104040 | M10 | 40 | 32,5 | 43 | 35 | 40 x 4 | 10 | 0,055 |
| K0430.124040 | M12 | 40 | 32,5 | 43 | 35 | 40 x 4 | 10 | 0,055 |
| K0430.144040 | M14 | 40 | 32,5 | 43 | 35 | 40 x 4 | 10 | 0,060 |
| K0430.164040 | M16 | 40 | 32,5 | 43 | 35 | 40 x 4 | 10 | 0,060 |
| K0430.204040 | M20 | 40 | 32,5 | 43 | 35 | 40 x 4 | 10 | 0,069 |
| K0430.125015 | M12 | 50 | 47,5 | 55 | 44 | 50 x 1,5 | 8 | 0,084 |
| K0430.145015 | M14 | 50 | 47,5 | 55 | 44 | 50 x 1,5 | 8 | 0,092 |
| K0430.165015 | M16 | 50 | 47,5 | 55 | 44 | 50 x 1,5 | 8 | 0,093 |
| K0430.205015 | M20 | 50 | 47,5 | 55 | 44 | 50 x 1,5 | 8 | 0,101 |
| K0430.125020 | M12 | 50 | 46,5 | 55 | 44 | 50 x 2 | 12 | 0,084 |
| K0430.145020 | M14 | 50 | 46,5 | 55 | 44 | 50 x 2 | 12 | 0,092 |
| K0430.165020 | M16 | 50 | 46,5 | 55 | 44 | 50 x 2 | 12 | 0,093 |
| K0430.205020 | M20 | 50 | 46,5 | 55 | 44 | 50 x 2 | 12 | 0,101 |
| K0430.125025 | M12 | 50 | 45,5 | 55 | 44 | 50 x 2,5 | 12 | 0,084 |
| K0430.145025 | M14 | 50 | 45,5 | 55 | 44 | 50 x 2,5 | 12 | 0,092 |
| K0430.165025 | M16 | 50 | 45,5 | 55 | 44 | 50 x 2,5 | 12 | 0,093 |
| K0430.205025 | M20 | 50 | 45,5 | 55 | 44 | 50 x 2,5 | 12 | 0,101 |
| K0430.125030 | M12 | 50 | 44,5 | 55 | 44 | 50 x 3 | 12 | 0,085 |
| K0430.145030 | M14 | 50 | 44,5 | 55 | 44 | 50 x 3 | 12 | 0,087 |
| K0430.165030 | M16 | 50 | 44,5 | 55 | 44 | 50 x 3 | 12 | 0,090 |
| K0430.205030 | M20 | 50 | 44,5 | 55 | 44 | 50 x 3 | 12 | 0,093 |
| K0430.125040 | M12 | 50 | 42,5 | 55 | 44 | 50 x 4 | 12 | 0,091 |
| K0430.145040 | M14 | 50 | 42,5 | 55 | 44 | 50 x 4 | 12 | 0,092 |
| K0430.165040 | M16 | 50 | 42,5 | 55 | 44 | 50 x 4 | 12 | 0,094 |
| K0430.205040 | M20 | 50 | 42,5 | 55 | 44 | 50 x 4 | 12 | 0,102 |
| K0430.146020 | M14 | 60 | 56,5 | 55 | 45 | 60 x 2 | 12 | 0,118 |
| K0430.166020 | M16 | 60 | 56,5 | 55 | 45 | 60 x 2 | 12 | 0,132 |
| K0430.206020 | M20 | 60 | 56,5 | 55 | 45 | 60 x 2 | 12 | 0,134 |
| K0430.146030 | M14 | 60 | 54,5 | 55 | 45 | 60 x 3 | 12 | 0,122 |

Artikelübersicht

| Bestellnummer | A | B | C | L | S | Passend zu Vierkantrohre | Belastbarkeit max. kN | Gewicht ca. kg |
|---------------------|-----|----|------|----|----|-----------------------------|--------------------------|-------------------|
| K0430.166030 | M16 | 60 | 54,5 | 55 | 45 | 60 x 3 | 12 | 0,123 |
| K0430.206030 | M20 | 60 | 54,5 | 55 | 45 | 60 x 3 | 12 | 0,124 |
| K0430.146040 | M14 | 60 | 52,5 | 55 | 45 | 60 x 4 | 12 | 0,119 |
| K0430.166040 | M16 | 60 | 52,5 | 55 | 45 | 60 x 4 | 12 | 0,121 |
| K0430.206040 | M20 | 60 | 52,5 | 55 | 45 | 60 x 4 | 12 | 0,125 |