

86D SERIES

Pneumatic Pin Clamps and Packages | Dimensions and Technical Information

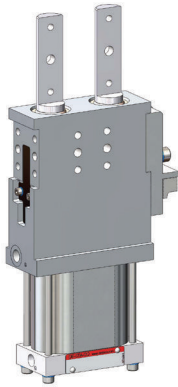
Pneumatic Pin Packages, Double Design

Application:

- Accurate positioning of sheet metal parts in welding environments and handling systems without rotation.
- At the end of the process, the pins are retracted from the holes so the part can be removed.

Key areas of application:

Automotive manufacturing, sheet processing industry, jig and general mechanical engineering.



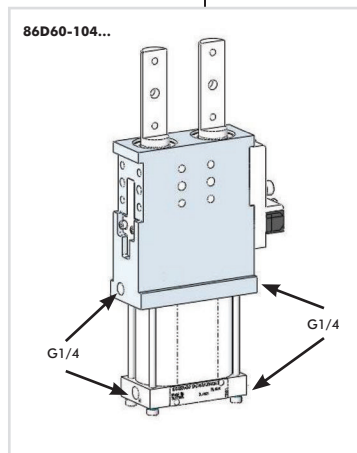
86D60-1
with sensing

Technical Information

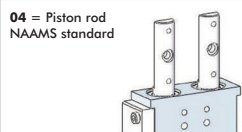
Model	Pushing force at 5 bar N [lbs]	Retraction force at 5 bar N [lbs]	Max. Operating Pressure bar [psi]	Piston Ø mm [in]	Stroke mm [in]	Weight Kg [lbs]	Air consumption per double stroke at 5 bar dm ³ [ft ³]
86D60-104**00A	1500 [377]	1100 [247]	6 [87]	63 [2.48]	40 [1.57]	3,8 [8.36]	1,4 [0.06]
86D60-104**00B					20 [0.79]	4 [8.80]	0,8 [0.03]
86D60-104**00C					60 [2.36]	4,1 [9.02]	2 [0.08]

How To Order

Example Model no.: **86D60-104D800A-K** — **K** = ceramic coated pin



Base model



Piston rod adaptor

L6 = Cover plate (without sensing system) 86D0-100L6
Mountable both sides

C8 = Sensing system 86D0-100C8
Mountable both sides.

D8 = Sensing system 86D0-100D8
Mountable both sides.

Inductive sensing system

00 = without Accessories

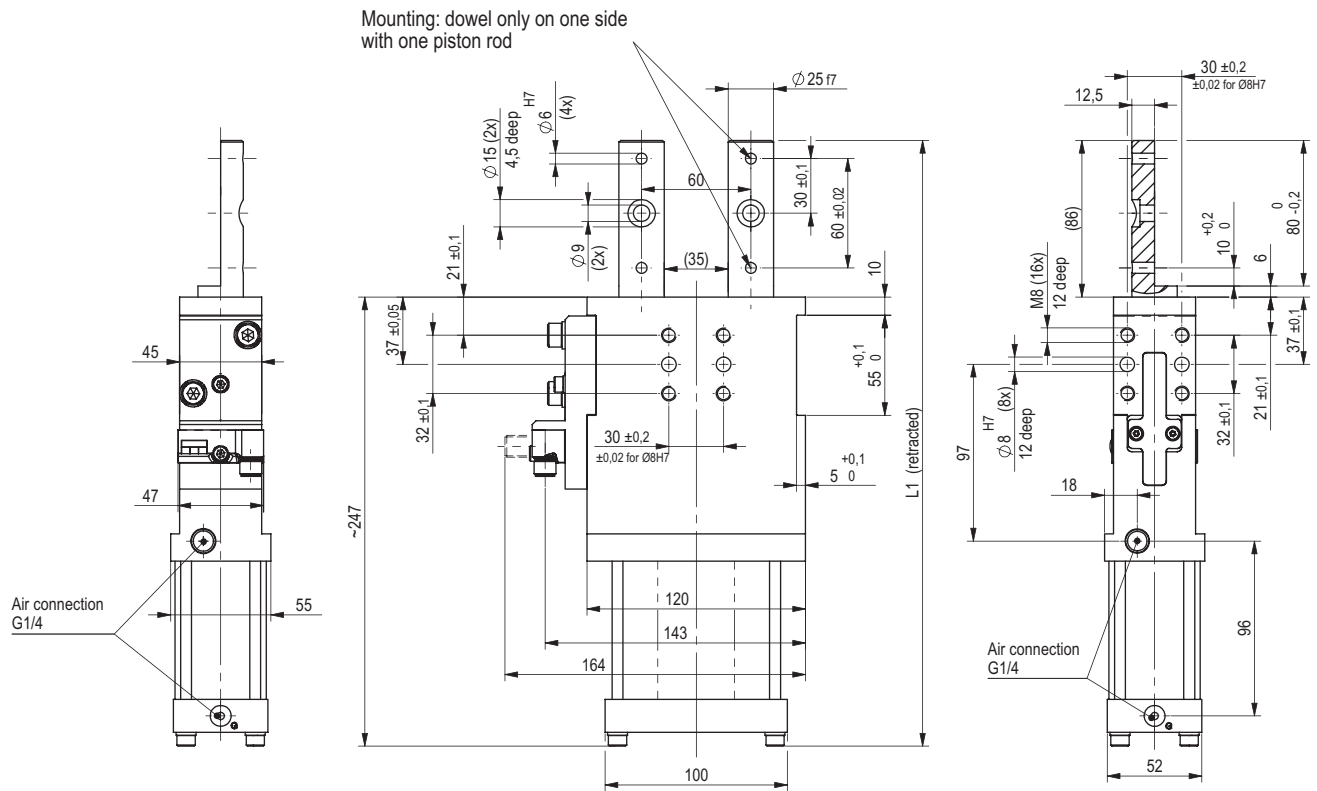
Accessories

A = 40 mm stroke
86D0-1000000A

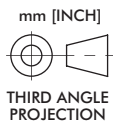
B = 20 mm stroke
86D0-1000000B

C = 60 mm stroke
86D0-1000000C

Stroke Limitation



Power by compressed air, max 6 bar
Operation with oil-free air is permissible

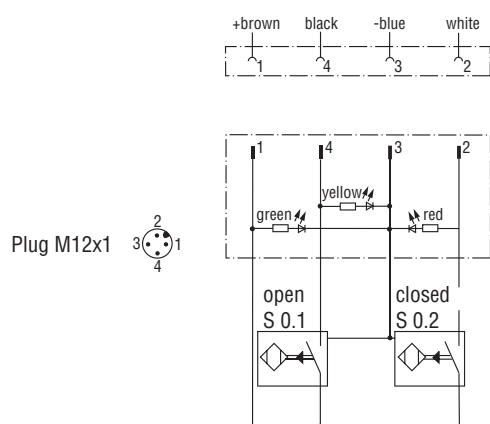


Model	L1 Retracted [mm]	L1 Extended [mm]	Stroke [mm]
86D60-104**00A	333	373	40
86D60-104**00B		353	20
86D60-104**00C		393	60

86D60-1... ACCESSORIES

Pneumatic Pin Clamps and Packages | Dimensions and Technical Information

Pin Assignment



Wiring diagram of electrical sensing system

Sensing system immune to interference from d.c. arc welding and a.c. arc welding.

Inductive design:

- C8 / D8 Connector plug M12x1

Major Spare Parts

Specifications	Order Number
End position sensing system C8, connector plug M12x1, parallel with cylinder	86D0-100C8
End position sensing system D8, connector plug M12x1, 90° swivel	86D0-100D8
Connecting Cable (1 connector socket & 5m cable) M12 x 1 Straight, 5 pin	8EL-002-1
Connecting Cable (1 connector socket & 5m cable) M12 x 1 Angular, 4 pin	8EL-003-1
Cylinder	8PW-105-1
Set of wearing parts for the cylinder gasket	8PW-105-1-00