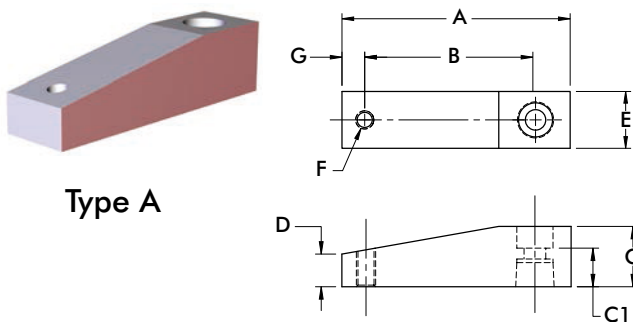




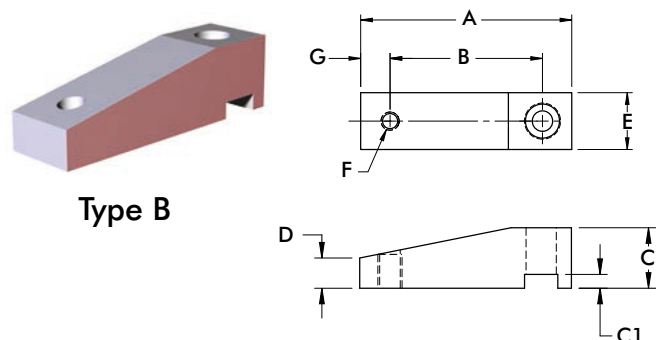
Standard Spannarm

Produktmerkmale:

- Für standardisierte Anwendung
- Aus Aluminium



Type A



Type B

Artikelnummer	Typ	Passend zu Modell	A	B	C	C1	D	E	F	G	Gewicht [lbs] kg
8JG-215-1	A	89R20-010-2 89B20-010-1 89E20-010-1	[2.64] 67	[2.05] 52	[0.59] 15	[0.33] 8.5	[0.24] 6	[0.59] 15	M6	[0.28] 7	[0.08] 0.04
8JG-217-1	A	89R32-010-2 89B30-010-1 89E30-010-1	[3.15] 80	[2.36] 60	[0.79] 20	[0.37] 9.5	[0.33] 8.5	[0.79] 20	M8	[0.39] 10	[0.14] 0.06
8JG-218-1	A	89R40-010-2 89R40-025-2 89B40-010-1 89E40-010-1	[3.74] 95	[2.76] 70	[0.98] 25	[0.45] 11.5	[0.55] 14	[0.98] 25	M8	[0.39] 10	[0.28] 0.13
8JG-219-1	A	89R50-025-2 89B50-025-1 89E50-025-1	[4.17] 106	[3.15] 80	[1.18] 30	[0.59] 15	[0.67] 17	[1.18] 30	M8	[0.39] 10	[0.42] 0.19
8JG-220-1	A	89R63-025-2 89B63-008-1 89E63-008-1	[4.72] 120	[3.54] 90	[1.38] 35	[0.67] 17	[0.79] 20	[1.38] 35	M10	[0.47] 12	[0.66] 0.30
801528	A	8015/8016 8115/8116	[1.74] 44.2	[1.11] 28.2	[0.37] 9.4	[0.33] 8.3	[0.25] 6.4	[0.62] 15.7	#10-32	[0.32] 8.1	[0.03] 0.01
801529	A	8015/8016 8115/8116	[2.87] 72.9	[2.24] 56.9	[0.37] 9.4	[0.33] 8.3	[0.25] 6.4	[0.62] 15.7	#10-32	[0.32] 8.1	[0.05] 0.02
821512	A	8215/8216 8415/8416 8315/8316	[2.75] 69.9	[2.00] 50.8	[0.75] 19.1	[0.57] 14.5	[0.38] 9.5	[0.75] 19.1	3/8-16	[0.38] 9.5	[0.04] 0.02
821513	A	8215/8216 8315/8316	[3.75] 95.3	[3.00] 76.2	[0.75] 19.1	[0.57] 14.5	[0.38] 9.5	[0.75] 19.1	3/8-16	[0.38] 9.5	[0.05] 0.02
841512	A	8415/8416	[2.31] 58.7	[1.56] 39.7	[0.75] 19.1	[0.57] 14.5	[0.38] 9.5	[0.75] 19.1	3/8-16	[0.38] 9.5	[0.03] 0.01
952250	B	9522	[2.28] 58	[1.77] 45	[0.59] 15	[0.16] 4	[0.30] 7.5	[0.59] 15	M6	[0.20] 5	[0.06] 0.03
952253	B	9522	[3.07] 78	[2.56] 65	[0.59] 15	[0.16] 4	[0.30] 7.5	[0.59] 15	M6	[0.20] 5	[0.08] 0.04