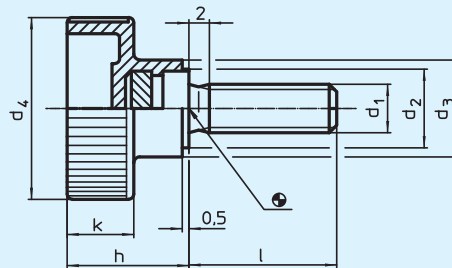


## EH 24830.

### Rändel- hohlschrauben

Kunststoff



#### Werkstoff:

**Griff:** • Thermoplast PA, schwarz

**Schraube:** • Stahl, galvanisch verzinkt  
• Rostfreier Stahl 1.4567

#### Hinweis:

Temperatureinsatzbereich von - 30 °C bis + 80 °C.

Best.-Nr. Stahl	Best.-Nr. Rostfreier Stahl	d <sub>1</sub>	l	d <sub>2</sub>	d <sub>3</sub>	d <sub>4</sub>	h	k	±g
24830.0030	–	M 4	10	9	12	19	14,0	8,0	4,0
24830.0032	–	M 4	15	9	12	19	14,0	8,0	4,0
24830.0034	–	M 4	20	9	12	19	14,0	8,0	4,2
24830.0036	–	M 4	30	9	12	19	14,0	8,0	7,0
24830.0042	24830.0242	M 5	10	9	12	19	14,0	8,0	4,3
24830.0043	24830.0243	M 5	15	9	12	19	14,0	8,0	5,0
24830.0045	24830.0245	M 5	20	9	12	19	14,0	8,0	5,5
24830.0046	24830.0246	M 5	25	9	12	19	14,0	8,0	6,0
24830.0050	24830.0250	M 6	10	12	14	24	16,5	9,5	7,0
24830.0053	24830.0253	M 6	16	12	14	24	16,5	9,5	8,0
24830.0054	24830.0254	M 6	20	12	14	24	16,5	9,5	9,0
24830.0055	24830.0255	M 6	25	12	14	24	16,5	9,5	9,0
24830.0057	24830.0257	M 6	30	12	14	24	16,5	9,5	10,0
24830.0060	–	M 8	16	14	16	30	19,5	11,0	14,0
24830.0062	24830.0262	M 8	20	14	16	30	19,5	11,0	16,0
24830.0064	24830.0264	M 8	25	14	16	30	19,5	11,0	17,0
24830.0065	24830.0265	M 8	30	14	16	30	19,5	11,0	19,0
24830.0067	24830.0267	M 8	40	14	16	30	19,5	11,0	20,0
24830.0070	24830.0270	M 10	20	16	18	36	22,5	12,5	30,0
24830.0072	24830.0272	M 10	25	16	18	36	22,5	12,5	31,0
24830.0074	24830.0274	M 10	30	16	18	36	22,5	12,5	33,0
24830.0076	–	M 10	40	16	18	36	22,5	12,5	38,0
–	24830.0278	M 10	45	16	18	36	22,5	12,5	43,0
–	24830.0280	M 10	55	16	18	36	22,5	12,5	48,0

