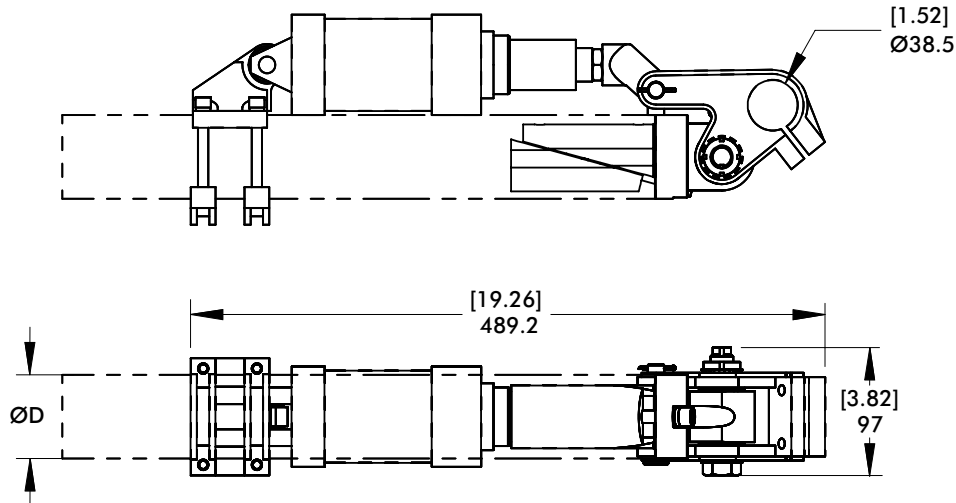
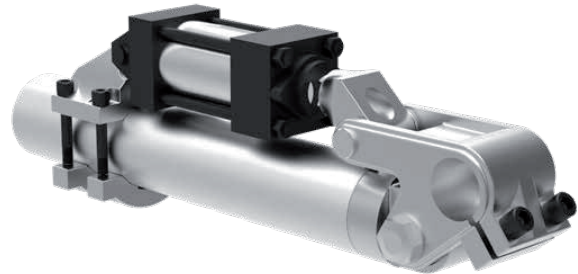


## WRIST ROTATE ASSEMBLY

Round Tooling | Dimensions | Technical Specifications

### Features:

- These self-contained tip units are designed for use with dual-axis loaders and unloaders.
- The amount of rotation can be adjusted with the use of a cylinder stop tube.
- The unique wedge-lock uses frictional force to secure the unit within the tubing. (U.S. Patent No. 5,411,232)  
\* Rotation is controlled by adjusting the length of a stop tube and limiting the stroke of the cylinder
- A rod extension is used to move the cylinder away from the rotate point. To order the rod extension separately, the part number is CPI-CRE-10-[Length]



Model Number	ØD	Weight
<b>CPI-WRWM-45</b>	60mm	[8.5 lb] 3.9 kg
<b>CPI-WRWM-90</b>	60mm	[10.5 lb] 4.8 kg



**Base Model**  
**WRWM**  
Wrist Rotate  
Assembly  
(Metric Version)

#### Rotation

**45** 0° - 45°  
**90** 0° - 90°

#### Cylinder Bore

**00** No Cylinder Provided  
**50** 50 mm  
**60** 60 mm

Model Number	ØD	Weight
<b>CPI-WRW-45</b>	2.50 in	[8.5 lb] 3.9 kg
<b>CPI-WRW-90</b>	2.50 in	[10.5 lb] 4.8 kg



**Base Model**  
**WRW**  
Wrist Rotate  
Assembly

#### Rotation

**45** 0° - 45°  
**90** 0° - 90°

#### Cylinder Bore

**00** No Cylinder Provided  
**20** 2.00"  
**25** 2.50"

Dimensions and technical information are subject to change without notice