

## Pneumatische Schwenkspanner Zubehör

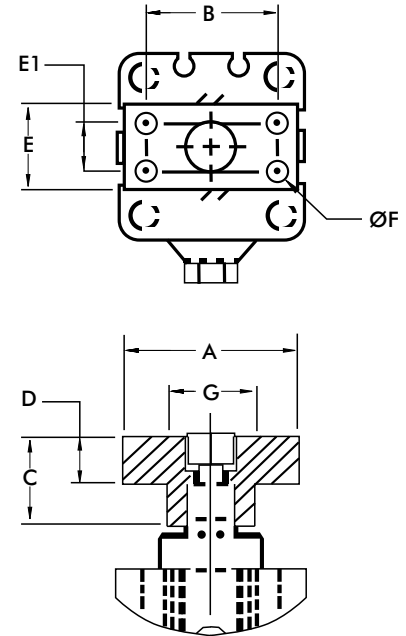
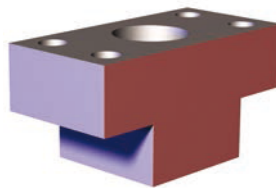
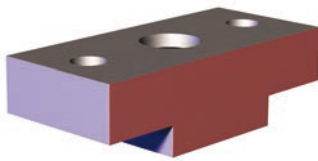
12.4



### Spannarm Adapter

#### Produktmerkmale:

- Für Montage von Sonderspannarmlen
- 360° schwenkbarer Spannarm
- Aus Aluminium



Artikelnummer	Passend zu Modell	A	B	C	D	E	E1	F	Gewicht [lbs] kg
<b>8MA-084-1</b>	89R20-010-2	[1.57]	[1.10]	[0.59]	[0.32]	[0.59]	--		[0.03]
	89B20-010-1	40	28	15	8	15			0,014
	89E20-010-1							[0.22]	
<b>8MA-086-1</b>	89R32-010-2		[1.38]	[0.79]	[0.43]	[0.79]	--	5,5 (2x)	[0.08]
	89B30-010-1		35	20	11	20			0,035
	89E30-010-1								
<b>8MA-087-1</b>	89R40-010-2	[1.97]							
	89R40-025-2	50	[1.50]	[0.98]	[0.51]	[0.98]	[0.55]	[0.22]	[0.11]
	89B40-010-1		38	25	13	25	14	5,5 (4x)	0,050
	89E40-010-1								
<b>8MA-088-1</b>	89R50-025-2	[2.36]	[1.77]	[1.18]	[0.59]	[1.18]	[0.59]	[0.28]	[0.19]
	89B50-025-1	60	45	30	15	30	15	7 (4x)	0,085
	89E50-025-1								
<b>8MA-089-1</b>	89R63-025-2	[2.56]	[1.89]	[1.38]	[0.67]	[1.38]	[0.71]	[0.35]	0.28]
	89B63-008-1	65	48	35	17	35	18	9 (4x)	0,125
	89E63-008-1								
<b>801532</b>	8015/8016	[1.37]	[1.00]	[0.39]	[0.25]	[0.62]	--	#10-32	[0.03]
	8115/8116	34,8	25,4					(2x)	0,014
<b>821556</b>	8215/8216	[1.50]	[1.06]	[0.75]	[0.37]	[0.75]	--	¼-20	[0.05]
	8315/8316	38,1	26,9					(2x)	0,020