

Montageanleitung/Installation Instructions

GRIP



PLASTGRIP



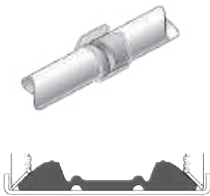
COMBIGRIP



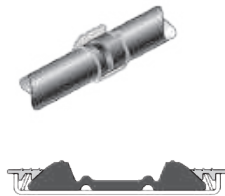
FLEX/REP



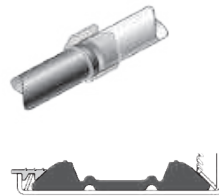
metal/metal



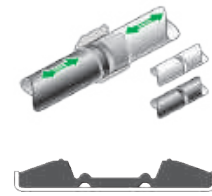
plastic*/plastic*



plastic*/metal



all

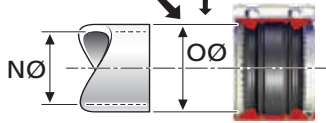
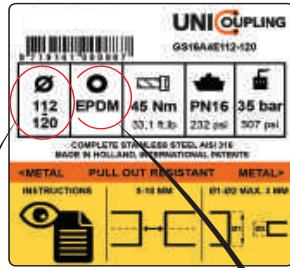


* ABS / PA / PB / PC / PE / PP / PVC / PMMA ✓

GFK / GRP / GRFP ✗



1.

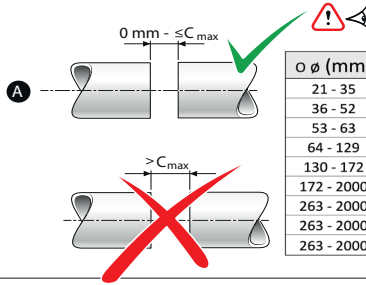


EPDM
Für Trinkwasser, Abwasser, Luft und Feststoffe.

NBR
Für Wasser, Gase, Öl, Krafstoff und andere Kohlenwasserstoffe.

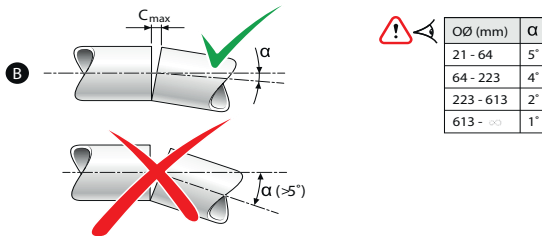
OØ (mm)	EPDM For drinking water, waste water, air and solids	NBR For water, gases, oils, fuels and other hydrocarbons
≤172	-30°C - +125°C	-20°C - +80°C
≥180	-20°C - +80°C	-20°C - +80°C

2.



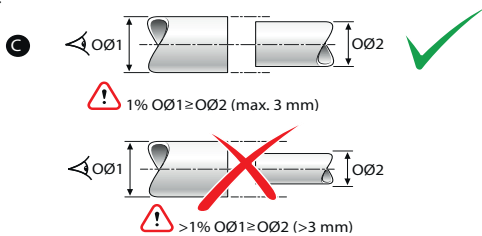
O Ø (mm)	Cmax (mm)	≈ B (mm)
21 - 35	10	≈ 45
36 - 52	15	≈ 60
53 - 63	25	≈ 75
64 - 129	30	≈ 95
130 - 172	40	≈ 110
172 - 2000	40	≈ 140
263 - 2000	80	≈ 210
263 - 2000	160	≈ 290
263 - 2000	300	≈ 430

3.

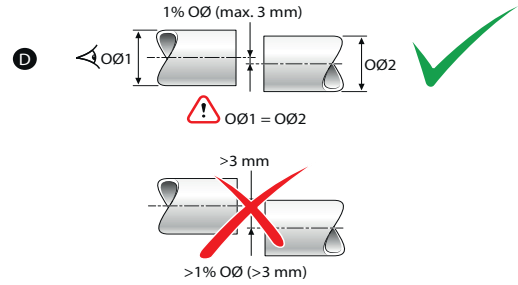


OØ (mm)	α
21 - 64	5°
64 - 223	4°
223 - 613	2°
613 - ...	1°

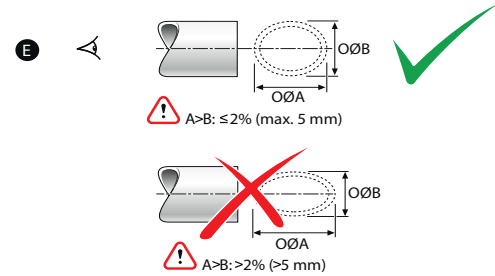
4.



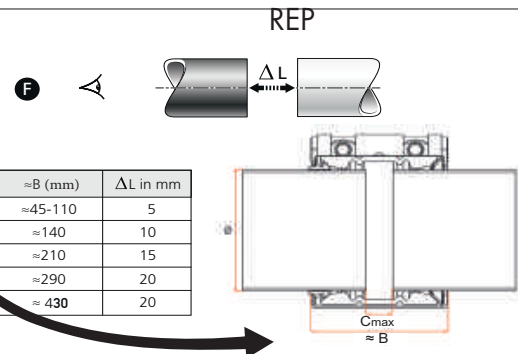
5.



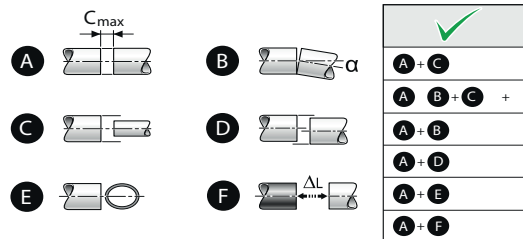
6.



7.

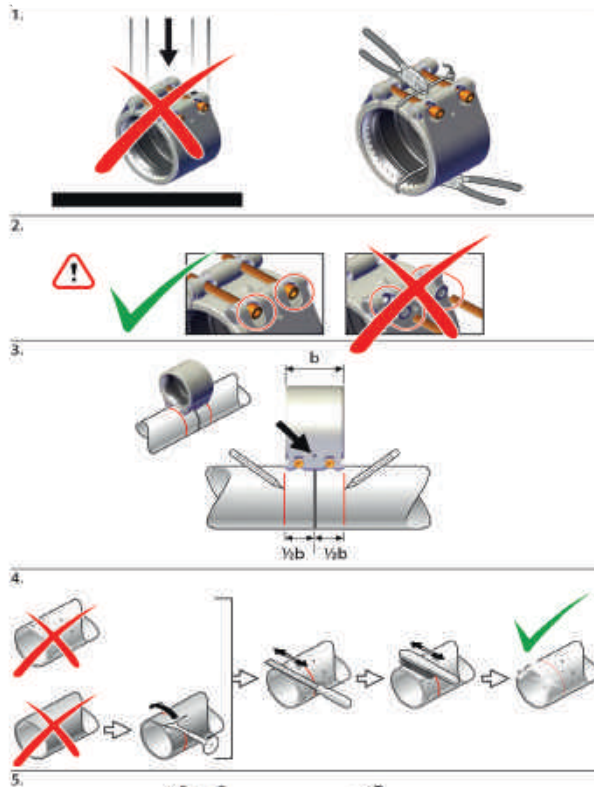


8.

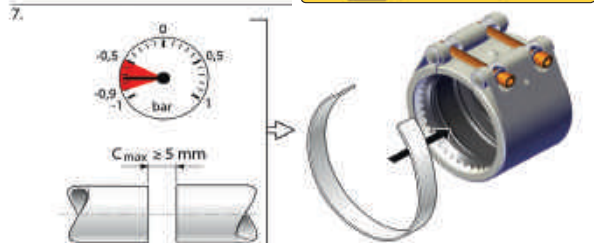
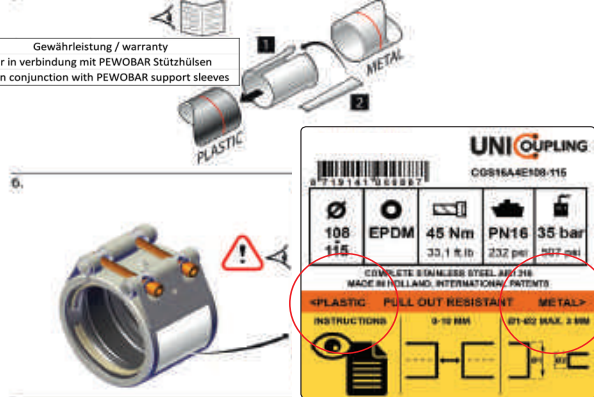


GRIP/COMBIGRIP/PLASTGRIP/FLEX

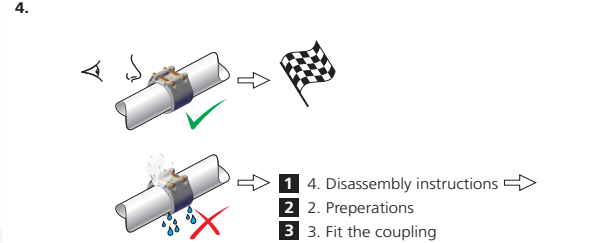
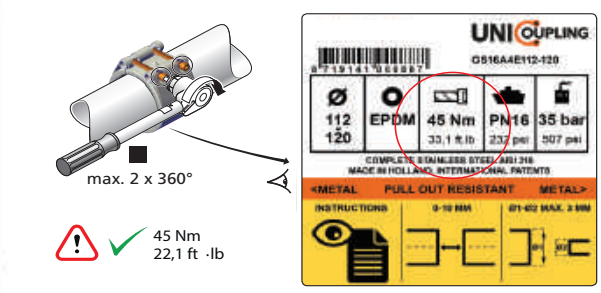
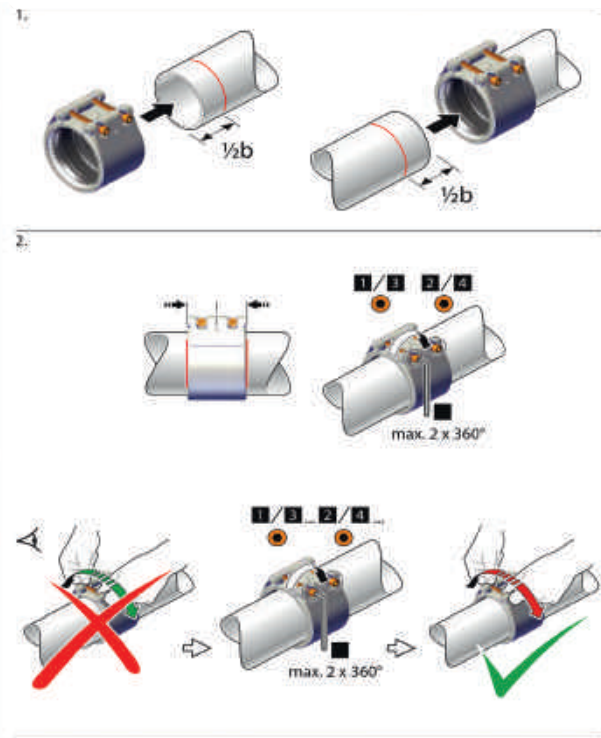
Vorbereitungen / Preparations



Gewährleistung / warranty
Nur in Verbindung mit PEWOBAR Stützhüllen
Only in conjunction with PEWOBAR support sleeves



Montage der Kupplung / Installation of the coupling



GRIP/COMBIGRIP/PLASTGRIP/FLEX



SCHRAUBEN ANZIEHEN

Nm ← → Nm

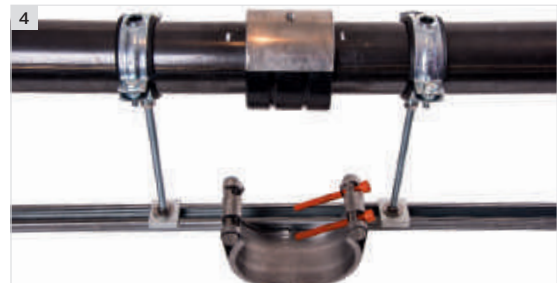
1. ABWECHSELND UND GLEICHMÄßIG
2. BIS ZUM ANGEBOHEBENEN DREHMOMENT
3. MEHRMALS WECHSELSEITIG DREHMOMENT PRÜFEN

Nm ← → Nm

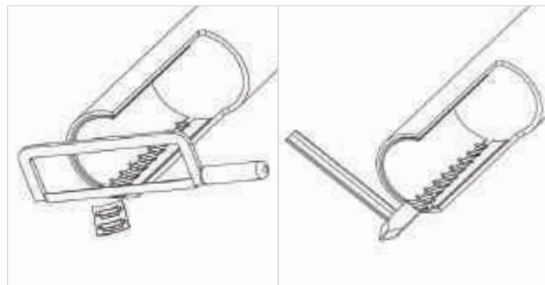
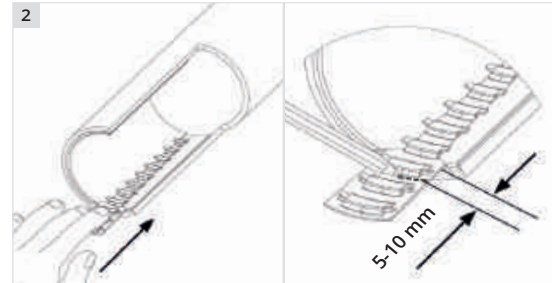
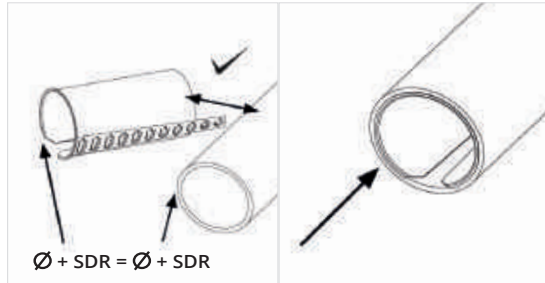
1. ALTERNATELY AND EVENLY
2. TILL RIGHT TORQUE IS REACHED
3. RECHECK TORQUE MULTIPLE TIMES



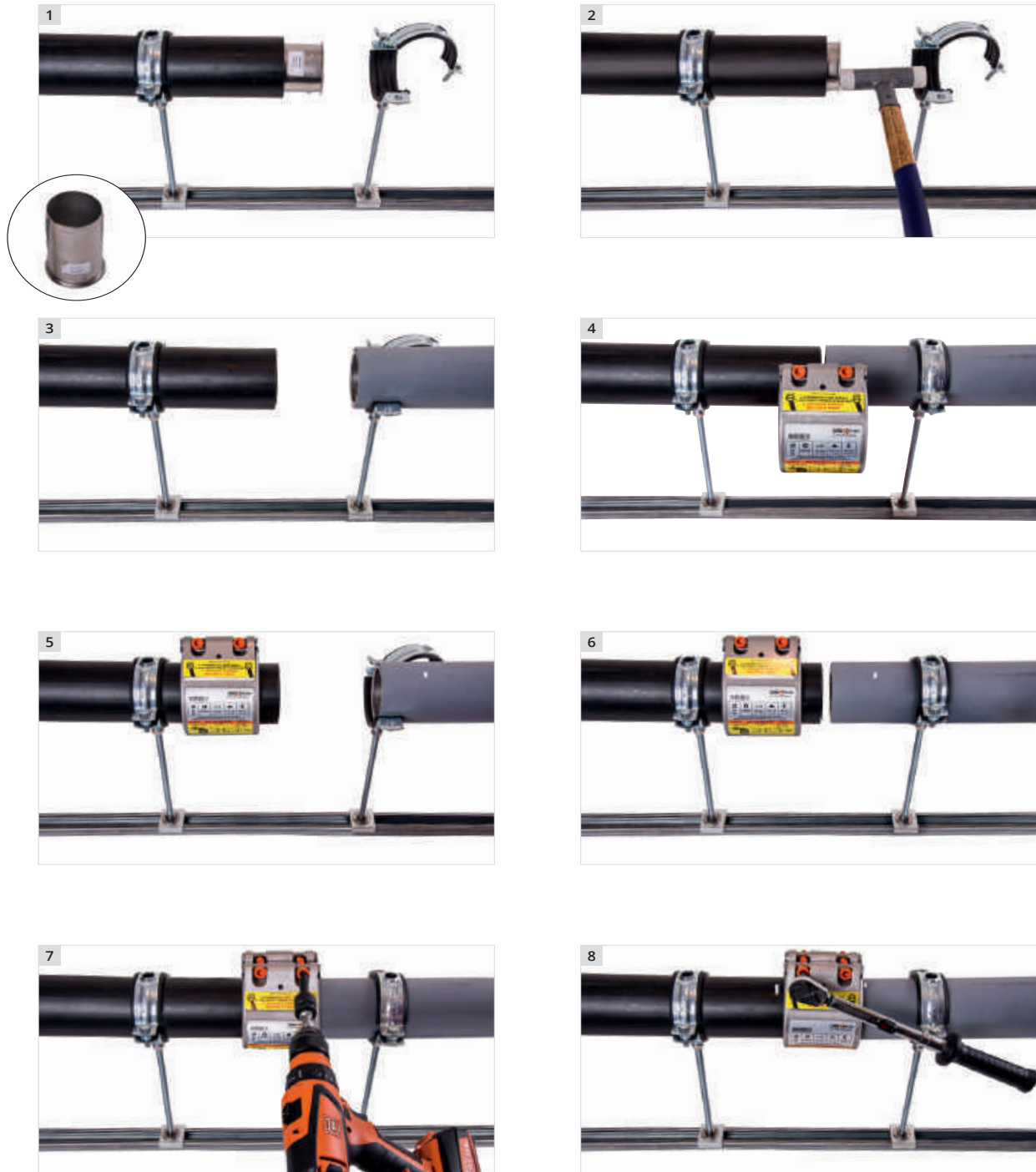
REP



STÜTZHÜLSEN MIT KEIL / SUPPORT SLEEVES WITH WEDGE

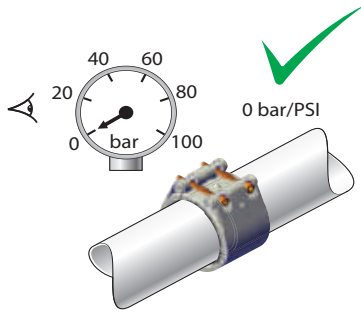


Nur / only COMBIGRIP / PLASTGRIP
ECO-STÜTZHÜLSEN OHNE KEIL / SUPPORT SLEEVES WITHOUT

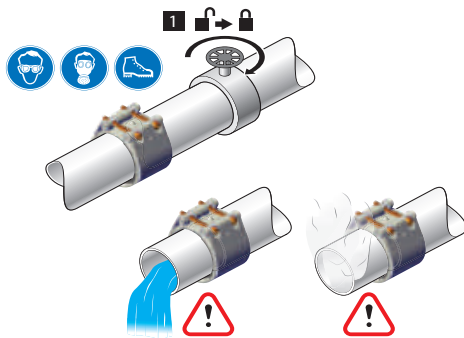


DEMONTAGE / DISASSEMBLY

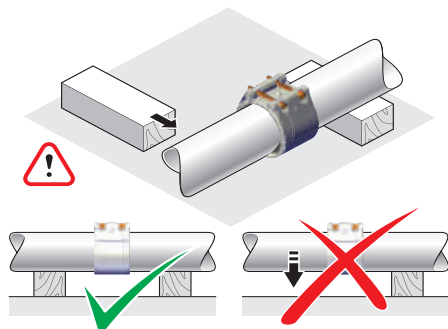
1.



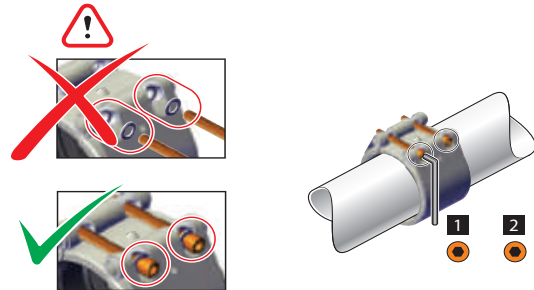
2.



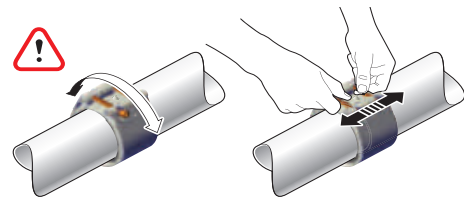
3.



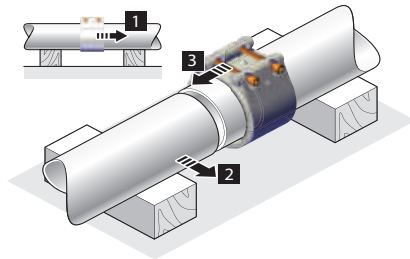
4.



5.



6.



7.

