



## BodyBuilder™ Octagonal Tooling | Dimensions | Technical Specifications

### RDCF-60B 60mm BodyBuilder™ Bayonet

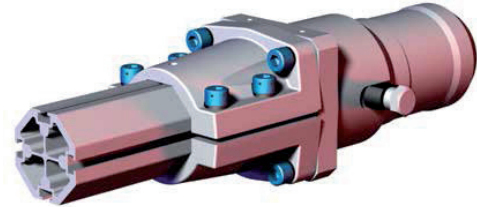
#### Features:

- Used in conjunction with Quick Disconnect Housing to provide an efficient method for changing tools manually.
- Two, hardened alignment pins allow quick and accurate installation into the housing.
- Optional 4-port air and electric available.

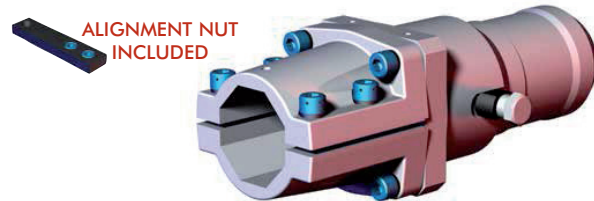
#### Specifications:

**Max. Static Product Load:**  
746 Nm [550 ft-lb]

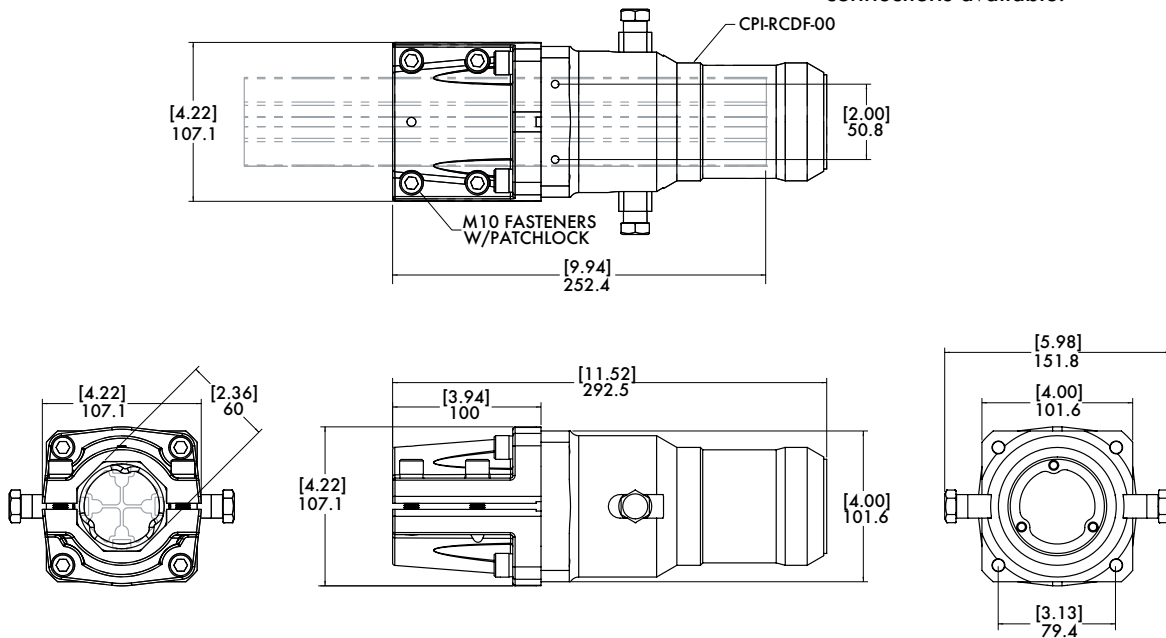
**Material:**  
Body: Aluminum  
Pins: Steel



Used in conjunction with Quick Disconnect Housing to provide an efficient method for changing tools manually.



Optional 4-port air and electric connections available.



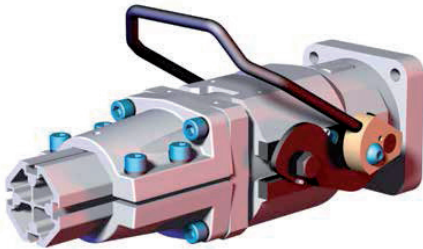
Model Number	Weight
<b>CPI-RDCF-60B-00-00-X</b>	<b>3.16 kg [6.96 lb]</b>

Dimensions and technical information are subject to change without notice



## BodyBuilder™ Octagonal Tooling | Dimensions | Technical Specifications

### RDN-25-6 Manual Quick Disconnect Housing



#### Specifications:

**Max. Static Product Load:**  
746 Nm [550 ft-lb]

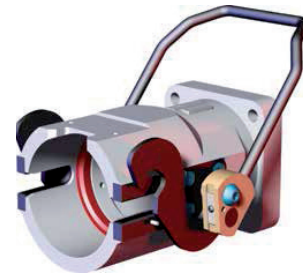
#### Material:

Body: Aluminum  
Knuckles: Brass  
Handle and Hooks: Steel  
Inserts: Urethane

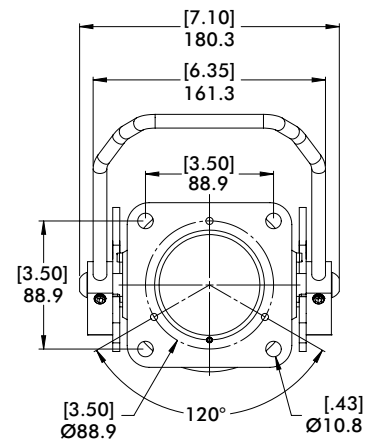
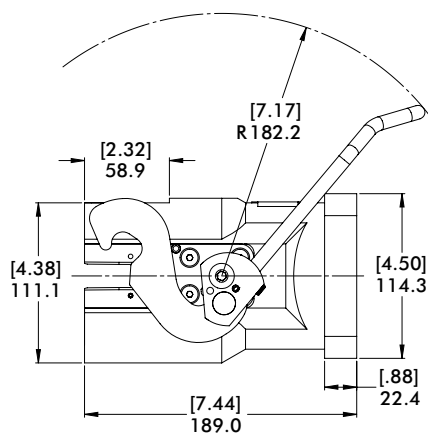
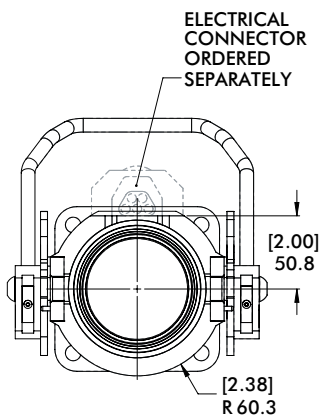
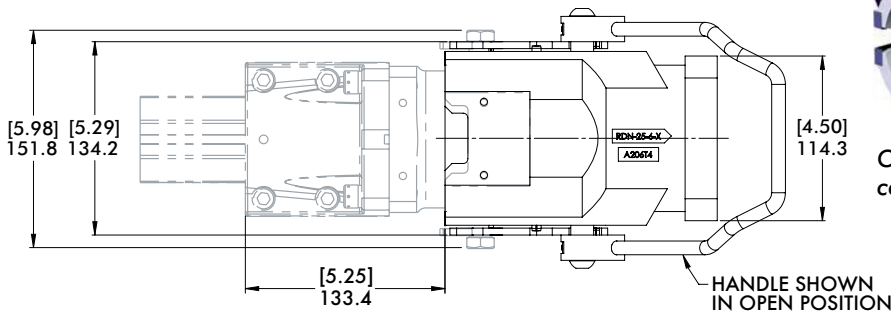
#### Features:

- Actuation of handle allows quick and accurate installation by pulling the bayonet into a fixed position within the housing.
- The internal rings eliminate vibration and seat the bayonet into a clamped position.
- Hardened steel retainer slots reduce wear and extend product life.

Used in conjunction with 60 mm BodyBuilder™ Bayonet to provide an efficient method for changing tools manually.



Optional 4-port air and electric connections available.



Model Number	Weight
<b>CPI-RDN-25-6</b>	4.00 kg [8.90 lb]

Dimensions and technical information are subject to change without notice