

**FK**

## Feinstruktur-Kunststoffgriffe FK

**Werkstoff und Oberfläche:**  
Polyamid PA 6, glaskugelver-  
stärkt, schwarz, mit mattglän-  
zender Feinstruktur.

**Tragkraft:**  
min. 1.000 N.

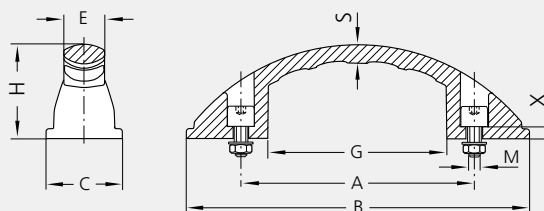
**Lieferumfang:**  
Mit oder ohne Abdeckkappen.  
Einschließlich schwarz verzink-  
ter Zylinderschrauben  
(Chrom VI frei),  
mit Innensechskant DIN 912,  
verzinkten Muttern DIN 934  
und Unterlegscheiben DIN 125.  
Auf Wunsch auch ohne  
Schrauben lieferbar.



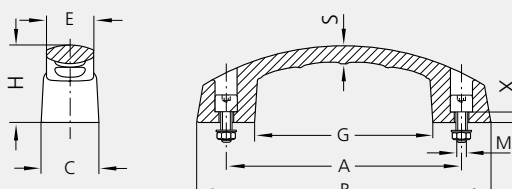
Typ FK-01

Typ FK-02

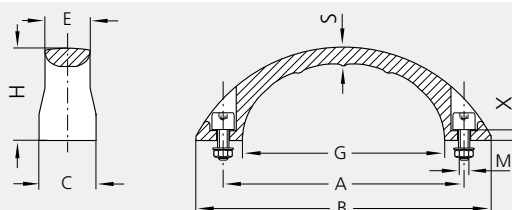
Typ FK-01



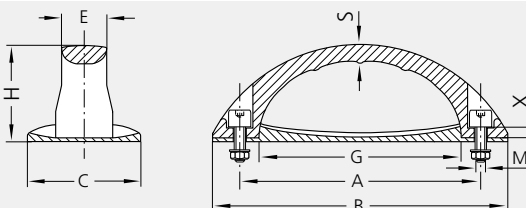
Typ FK-02



Typ FK-03



Typ FK-04



**FK**



Typ FK-03

Typ FK-04

## Fine Structure Plastic Handles FK

**Material and surface:**  
Polyamide PA 6, glass ball reinforced. Black with half-matt fine structure.

**Stress resistance:**  
min. 1.000 N.

**Scope of delivery:**  
With or without cover caps. Including black galvanized cheese head screws (chromium VI free) with hexagon sockets DIN 912, galvanized nuts DIN 934 and washers DIN 125.

Also available without screws.

Griff Handle	Typ A	Typ B									
	ohne Kappen without caps	mit Kappen with caps	A	M	B	C	H	S	G	E	X
FK-01	FK-01.A100.84	-	100	M6 x 25	147	31	40	8	77	17	5,0
	FK-01.A120.84	-	120	M6 x 25	184	39	42	9	96	19	6,0
	-	FK-01.B120.84	120	M8 x 30	209	48	50	14	103	24	5,0
	-	FK-01.B140.84	140	M8 x 30	230	50	53	15	114	25	5,0
	-	FK-01.B160.84	160	M8 x 30	248	53	56	14	122	26	5,0
FK-02	FK-02.A100.84	-	100	M6 x 25	130	27	38	9	79	22	5,0
	FK-02.A120.84	-	120	M6 x 25	150	29	38	9	91	23	8,0
	-	FK-02.B120.84	120	M8 x 30	153	33	51	15	87	22	5,0
	-	FK-02.B140.84	140	M8 x 30	178	38	59	17	101	26	6,0
FK-03	FK-03.A100.84	-	100	M6 x 25	121	23	37	8	84	19	4,0
	-	FK-03.B120.84	120	M6 x 25	152	28	50	12	105	23	5,0
	-	FK-03.B140.84	140	M8 x 30	177	31	54	15	122	25	5,5
FK-04	FK-04.A100.84	-	100	M6 x 25	121	48	40	11	84	19	6,0
	-	FK-04.B120.84	120	M6 x 25	152	57	52	16	104	23	7,0
	-	FK-04.B140.84	140	M8 x 30	177	62	56	19	122	25	7,5

Alle Maße in mm. / All dimensions in mm.