

M1 - M4

Maschinen- und Kommandogehäuse-Griffe M1 und M4

Werkstoff und Oberfläche:
Rundaluminium AlMgSi 0,5;
gleitgeschliffen und pulverbeschichtet in RAL 9002 grau-weiß.

Farbsonderausführungen:
Andere RAL-Farbtöne auf Anfrage.

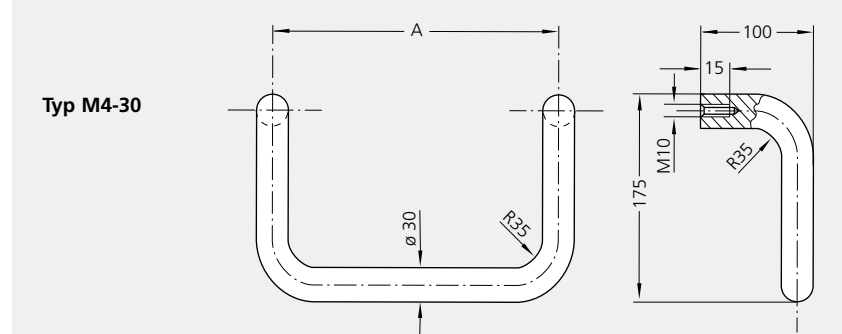
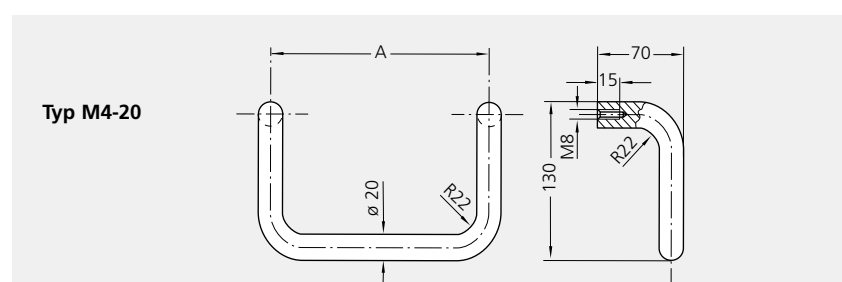
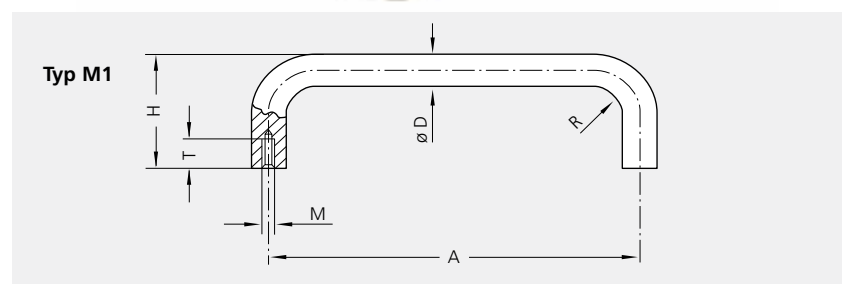
Tragkraft:
min. 1.000 N.

Handles for Housing on Machines and Controls M1 and M4

Material and surface:
Round bar aluminium AlMgSi 0.5; vibratory ground and powder coated in RAL 9002 grey white.

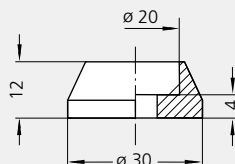
Special colour versions:
Other RAL shades are available on request.

Stress resistance:
min. 1.000 N.



M1 - M4

**Al-Abschlusscheiben
für Grifftypen M1-20 und M4-20
Al-cover plates
for handle types M1-20 und M4-20**



Typ M1		grauweiß / grey white RAL 9002				
	A	Bestell-Nr. / Order no.	M	T	H	R
ø 20	200	M1-20.R200.9002				
	250	M1-20.R250.9002				
	300	M1-20.R300.9002	8	15	70	22
	350	M1-20.R350.9002				
	400	M1-20.R400.9002				
	600	M1-20.R600.9002				
Al-Abschlusscheiben Al-cover plates		M1-20.000.9002	Packung à 2 Stück Pack of 2 pieces			
ø 25	200	M1-25.R200.9002				
	250	M1-25.R250.9002				
	300	M1-25.R300.9002	8	15	85	28
	400	M1-25.R400.9002				
	600	M1-25.R600.9002				
ø 30	300	M1-30.R300.9002				
	400	M1-30.R400.9002	10	15	100	34
	600	M1-30.R600.9002				
Typ M4						
ø 20	200	M4-20.200.9002				
	250	M4-20.250.9002				
	300	M4-20.300.9002				
	350	M4-20.350.9002				
	400	M4-20.400.9002				
Al-Abschlusscheiben Al-cover plates		M1-20.000.9002	Packung à 2 Stück Pack of 2 pieces			
ø 30	300	M4-30.300.9002				
	350	M4-30.350.9002				
	400	M4-30.400.9002				
	500	M4-30.500.9002				

Alle Maße in mm. / All dimensions in mm.