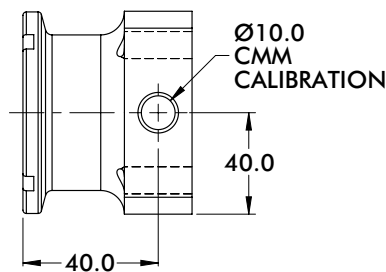
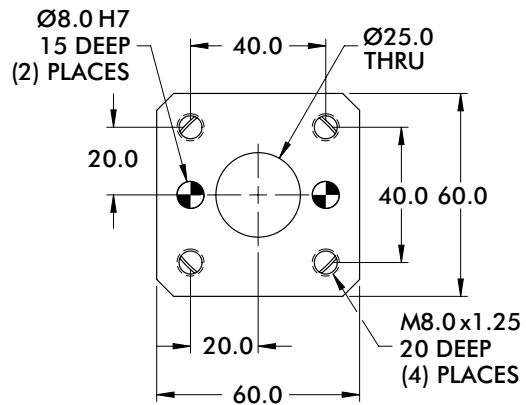
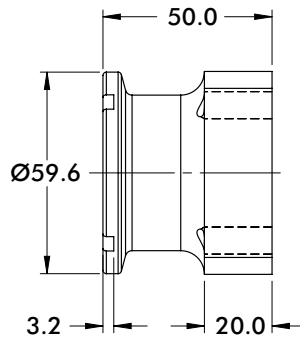
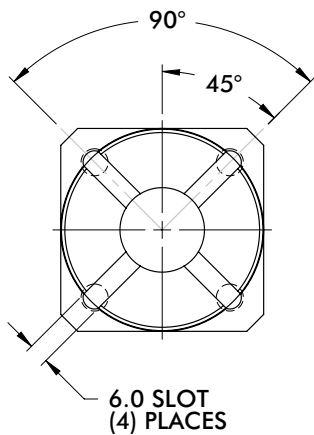
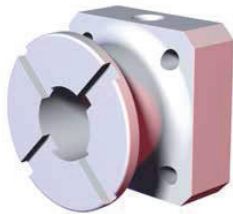
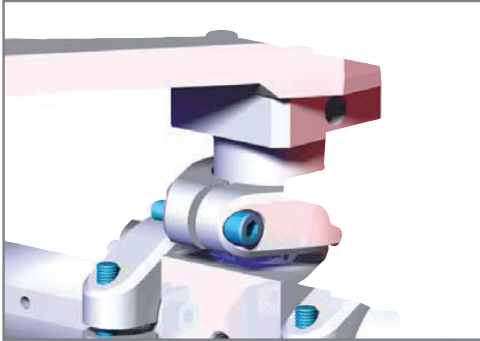




Spidergrip Tooling Components | Dimensions | Technical Specifications

SPIDERGRIP MID MOUNT ANCHOR

Ø60mm Mid Mount Anchor
40mm x 40mm Mounting Pattern - 50mm Face Offset



Model Number	Weight
STS0013-BM2	.25 kg [1.50 lb]

Dimensions and technical information are subject to change without notice

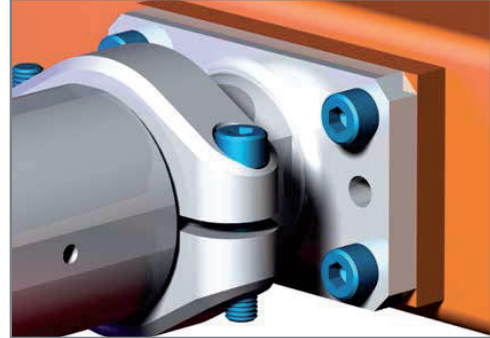
SPIDERGRIP MID MOUNT ANCHOR

Spidergrip Tooling Components | Dimensions | Technical Specifications

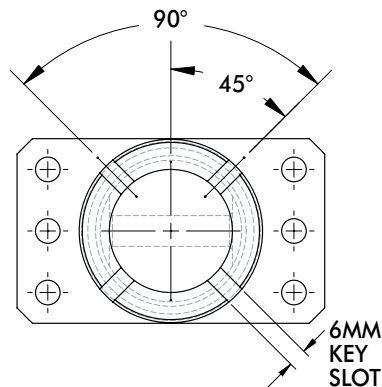
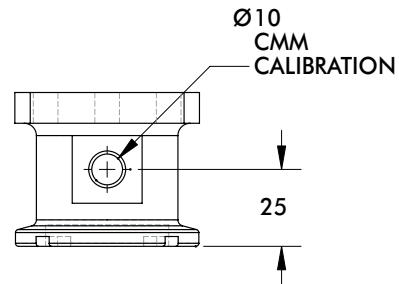
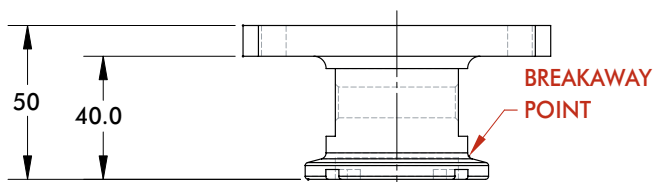
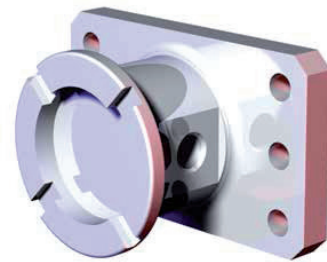
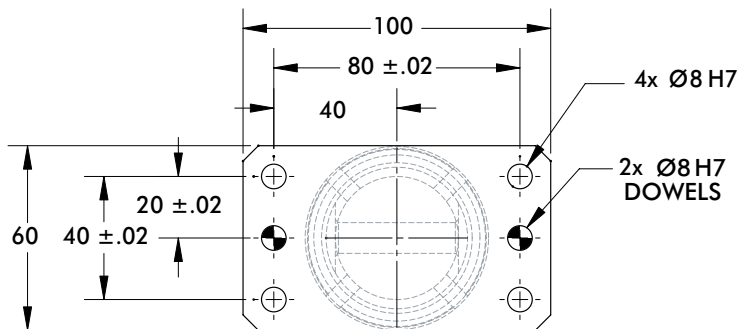


Ø60mm Base Anchor with 50mm Face Offset
80mm x 40mm Mounting Pattern

US PATENT# 7,331,104
ALL OTHER PATENTS PENDING



Engineered Breakaway Part



This Product is designed to breakaway at 1627 N*m [1200 ft-lb]

Model Number	Weight
STS0016-NA-2P	.31 kg [.68 lb]

Dimensions and technical information are subject to change without notice

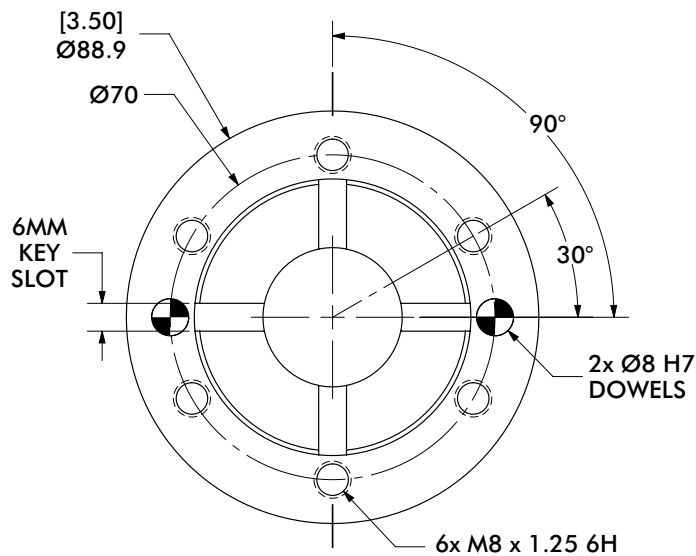
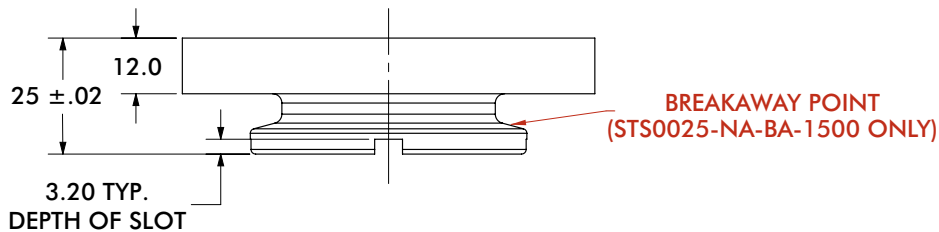


SPIDERGRIP MID MOUNT ANCHOR

Spidergrip Tooling Components | Dimensions | Technical Specifications



Ø60mm Base Anchor with 25mm Face Offset
(6) Hole Ø70mm Mount Pattern



Model Number	Weight
STS0025-NA	252g [0.6 lb]
STS0025-NA-BA-1500*	242g [0.5 lb]

*This Product is designed to breakaway at 1500 N*m [1106 ft-lb]

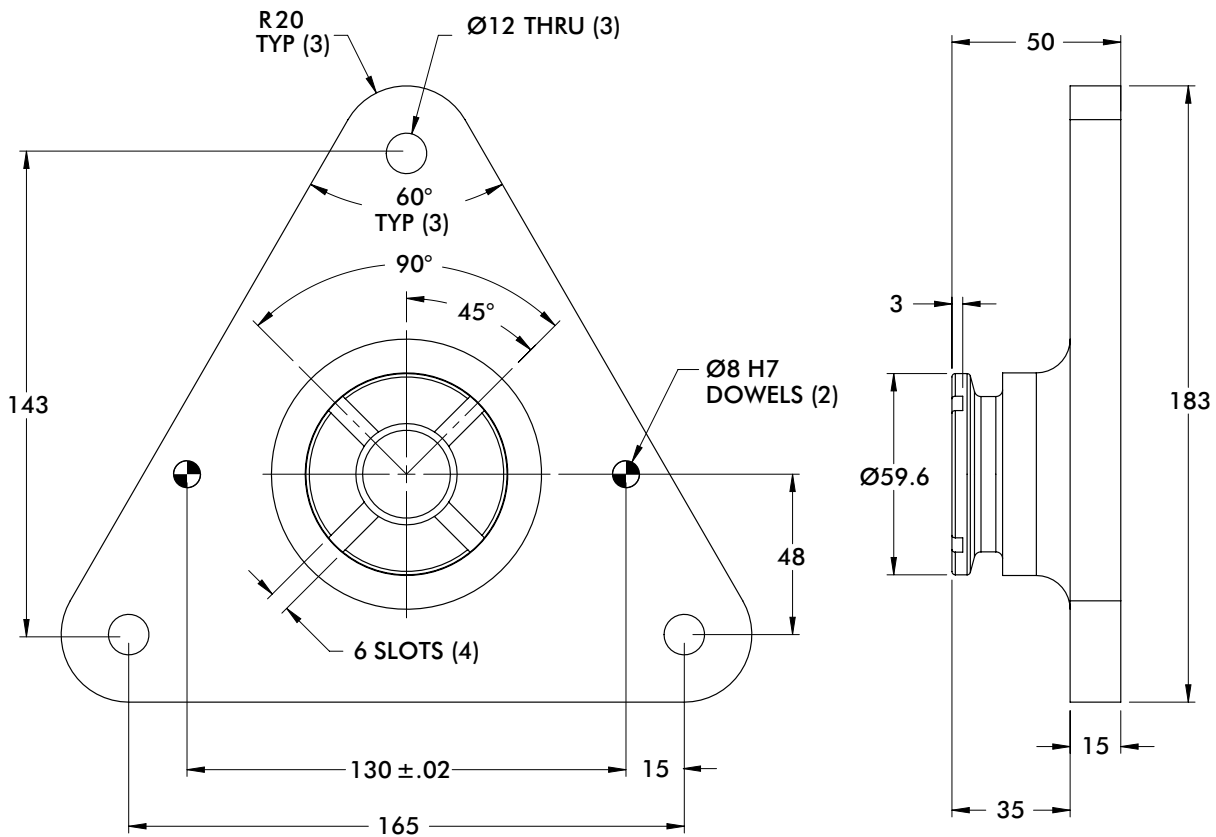
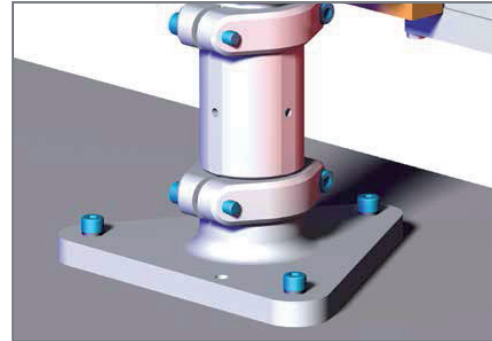
Dimensions and technical information are subject to change without notice

SPIDERGRIP MID MOUNT ANCHOR

Spidergrip Tooling Components | Dimensions | Technical Specifications



Ø60mm HD Anchor Mount
(3) Hole Ø190mm Mount Pattern



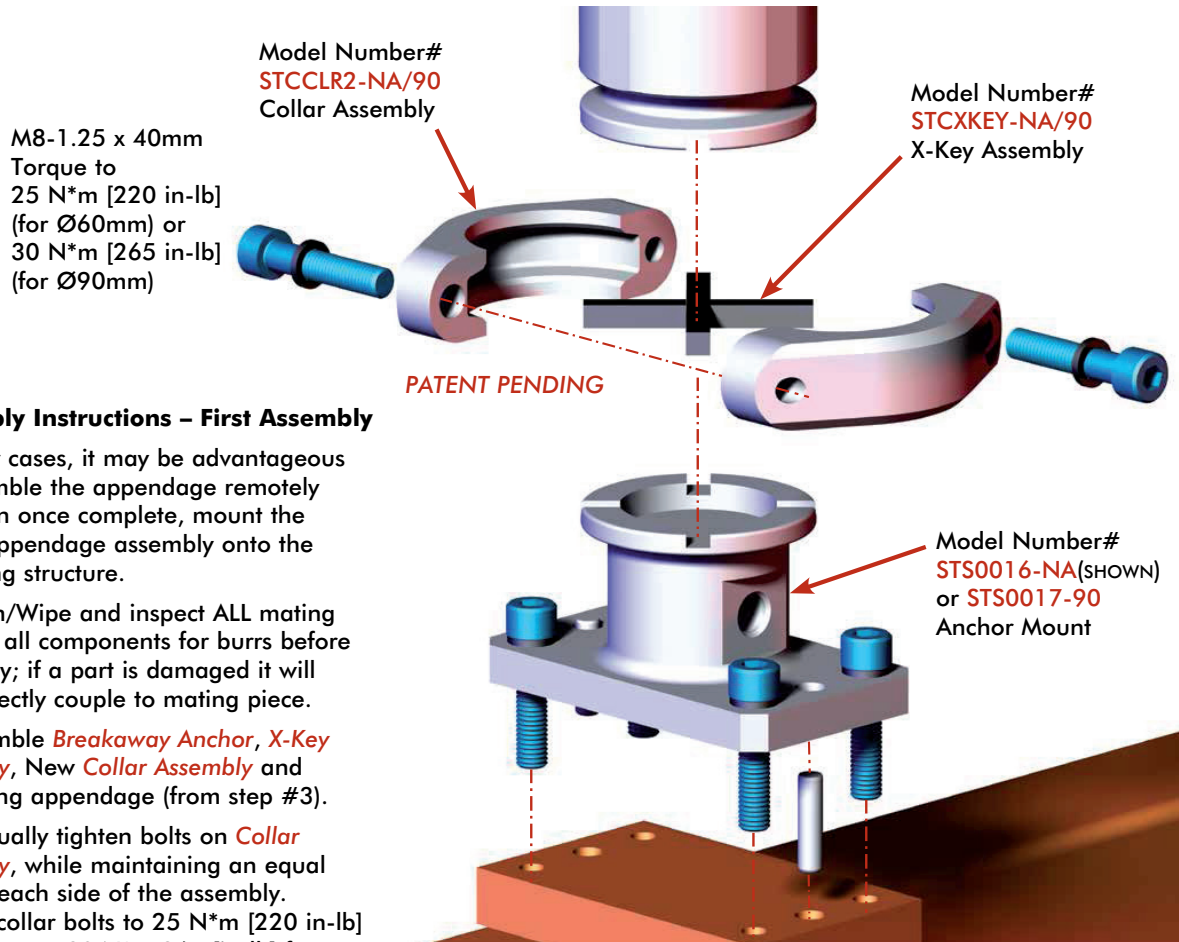
Model Number	Weight
STP0001-NA	1.09 kg [2.40 lb]

Dimensions and technical information are subject to change without notice



SPIDERGRIP END EFFECTOR TOOLING SYSTEMS

Spidergrip Tooling Components | Assembly Instructions



Assembly Instructions – First Assembly

In many cases, it may be advantageous to assemble the appendage remotely and then once complete, mount the entire appendage assembly onto the mounting structure.

1. Clean/Wipe and inspect ALL mating faces of all components for burrs before assembly; if a part is damaged it will not correctly couple to mating piece.
2. Assemble **Breakaway Anchor**, **X-Key Assembly**, New **Collar Assembly** and remaining appendage (from step #3).
3. Gradually tighten bolts on **Collar Assembly**, while maintaining an equal gap on each side of the assembly. Torque collar bolts to 25 N*m [220 in-lb] for 60mm, or 30 N*m 265 [in-lb] for 90mm. Do not re-torque once desired torque is reached.
4. Mount appendage as assembled to steel backbone and insert new 8mm dowels into the dowel holes on the **Breakaway Anchor**.
5. Insert new M8-1.25 patchlock bolts into **Breakaway Anchor**, torque in a cross pattern following NAAMS recommended torque.
6. Attach steel tether (**STS-TETHER-08** or **STS-TETHER-16**) to appendage via one of the bolts located on the base of the **Breakaway Anchor**. The other loop will be attached to the first threaded M6 hole (located on the boom) or the M8 hole located on the edge part. The tether may also be wrapped around the appendage to reduce cable slack.



Note: Performance may vary if used with non-DESTACO components

Dimensions and technical information are subject to change without notice

SPIDERGRIP ANCHORS AND COLLAR ASSEMBLIES



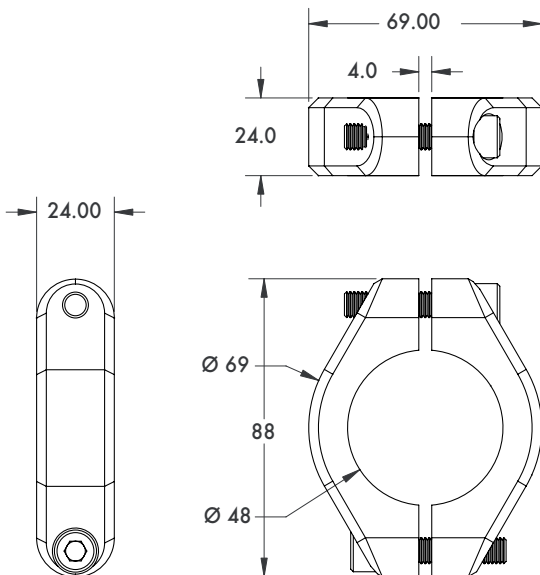
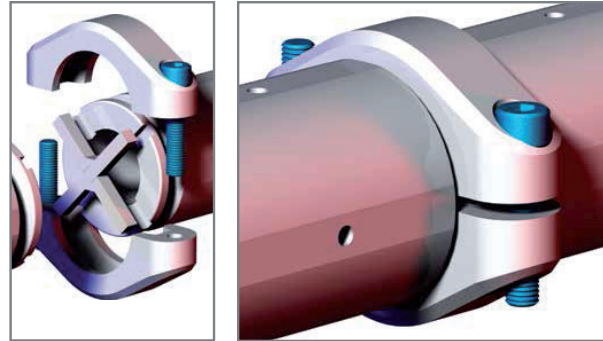
Spidergrip Tooling Components | Dimensions | Technical Specifications

Ø60mm Collar Components and Assembly

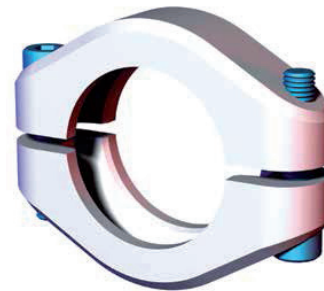
Assembly Number	Weight
STCCLR2-NA	.19 kg [.42 lb]

Includes (1) Collar Assembly (STCCLR2-NA) and (1) X-Key Assembly (STCXKEY-NA). Patch-lock fasteners included.

Max bolt torque when clamping to: 25 N*m [220 in-lbs]

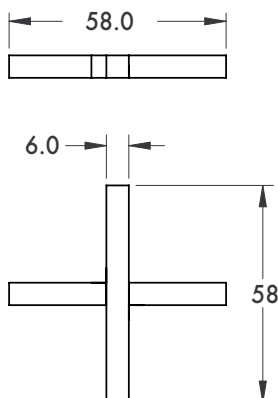


US PATENT# 7,331,104
ALL OTHER PATENTS PENDING



Patch-lock fasteners included.

Model Number	Weight
STCCLR2-NA	.16 kg [.35 lb]



Material: Steel

Model Number	Weight
STCXKEY-NA	.03 kg [.07 lb]

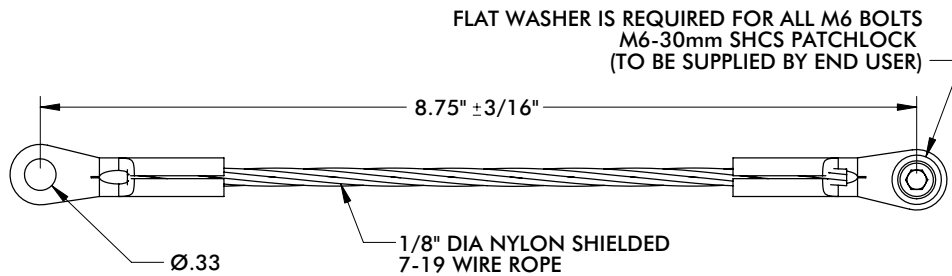
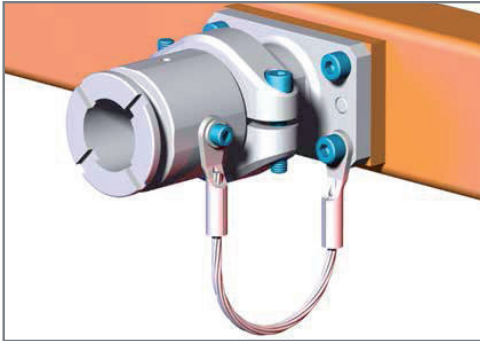
Dimensions and technical information are subject to change without notice



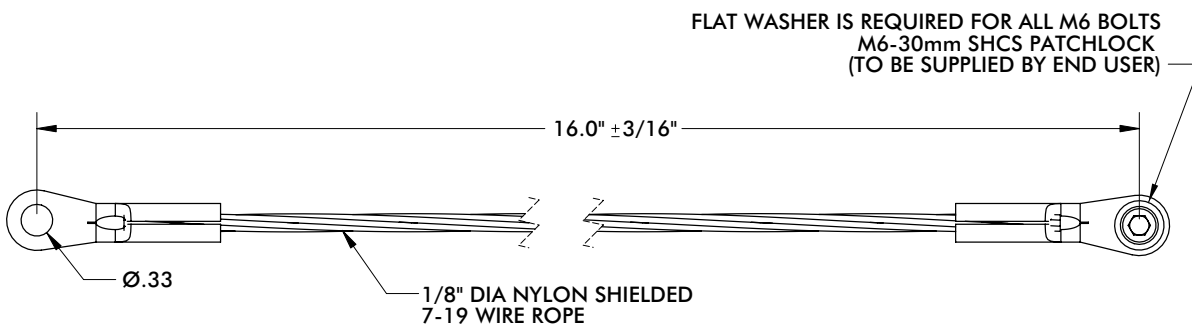
Spidergrip Tooling Components | Dimensions | Technical Specifications

SPIDERGRIP TETHERS

9 inch and 16 inch Tether Assemblies



Model Number	Weight
STS-TETHER-09	.07 kg [.15 lb]



Model Number	Weight
STS-TETHER-16	.09 kg [.19 lb]

Dimensions and technical information are subject to change without notice