

Service Manual

ROBOHAND | RPW Series



WARNING: This is a controlled document. It is your responsibility to deliver this information to the end user of the DESTACO Robohand product. Failure to deliver this could result in your liability for injury to the user or damage to the machine. For copies of this manual, call your Customer Service Representative at 1.248.836.6700

RPW SERIES

Parallel Grippers | Maintenance and Assembly Procedure

Item Qty	Name
01	1 Body
03	2 Piston
04	2 Cap
05	2 Shaft
06	1 Gear Cover
07	1 Gear
09	2 Shaft, Piston
10	2 Shaft, Gear
20	2 Block, End W/ Target Holes
21	1 Bearing, Needle
22	1 Dowel Pin
23	1 Ball

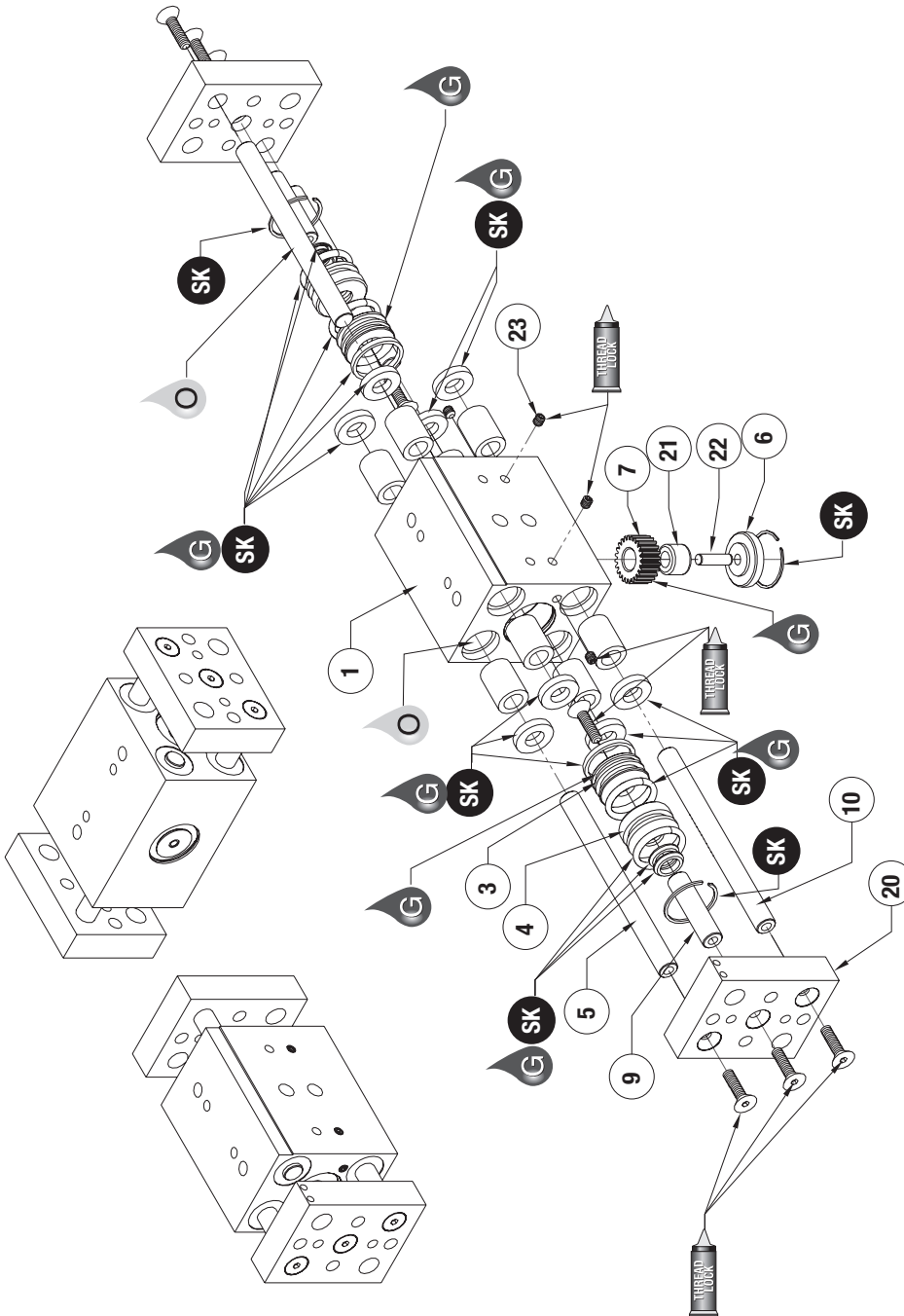
Assembly Procedure

- 1) Lubricate and install seals.
- 2) Install pistons and shafts.*
- 3) Place piston caps and retaining rings into body
- 4) Install tooling plates and shafts
- 5) Place bearing, shaft, and gear** into body and install cap and retaining ring. for sync. version:
 - a) For disassembly, use magnet to pull gear out of body.
 - b) Install 2 rack shafts with teeth facing syncing gear.

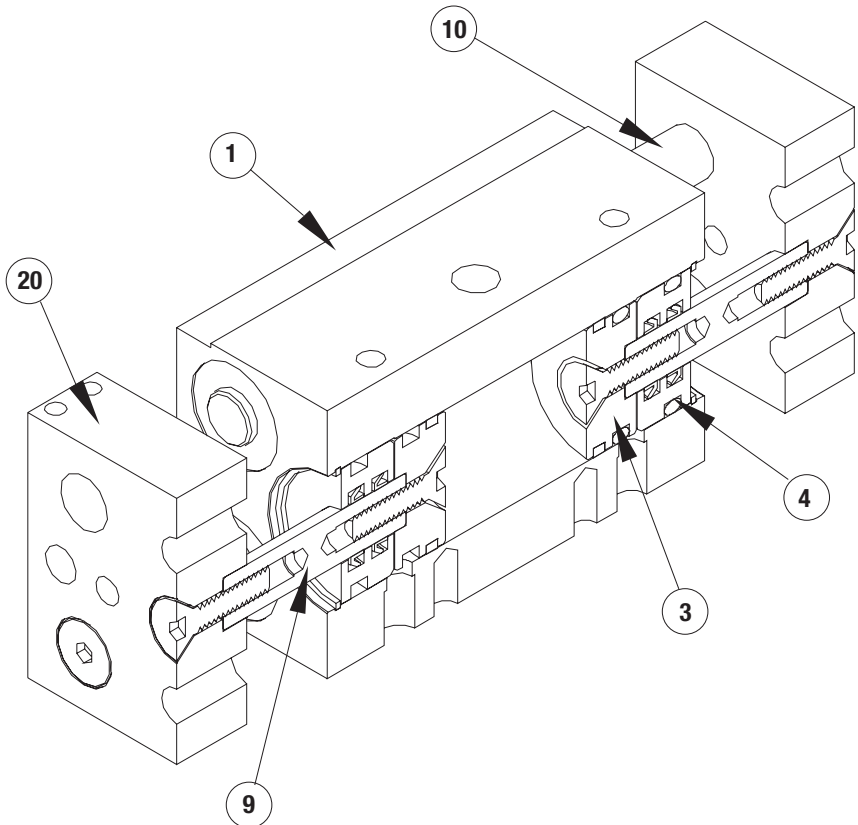
Non-Synchronous Procedure

- 1) Take RPW synchronous gripper and remove the retainer ring and gear cover.
- 2) Slide out dowel pin and bearing.
- 3) Remove gear from gripper. (a magnet is often very helpful in removing the gear.)
- 4) Replace the dowel pin, gear cover, and retainer ring. The gripper is now non-synchronous.

SK Seal Repair Kit Order #'s See Product Data Sheets



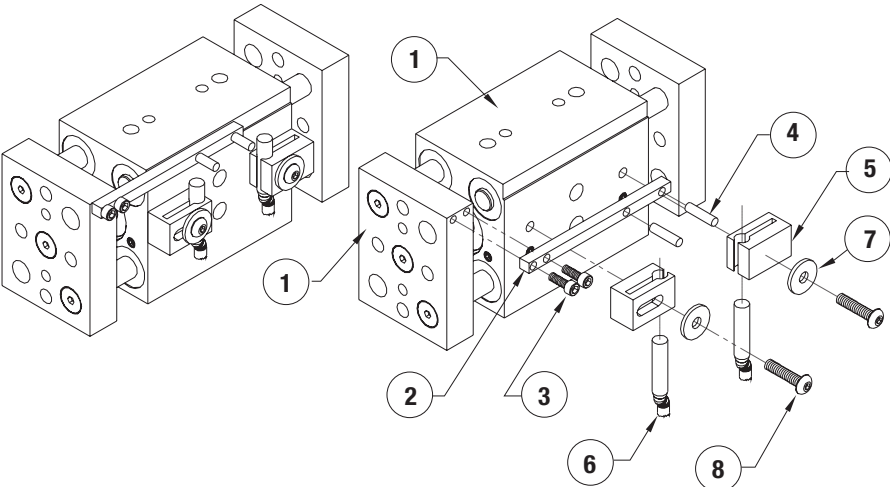
SK Seal Kit Items	THREAD LOCKER Thread Locker	KRYTOX Krytox™ Lubricant	O Lightweight Machine Oil	G Teflon® Based Grease	GLUE Super Bonder	Third Angle Projection
-----------------------------	---------------------------------------	------------------------------------	-------------------------------------	----------------------------------	-----------------------------	-------------------------------



Item	Qty	Name
01	1	Body
03	2	Piston
04	2	Cap
05	2	Shaft
06	1	Gear Cover
07	1	Gear
09	2	Shaft, Piston
10	2	Shaft, Gear
20	2	Block, End W/ Target Holes
21	1	Bearing, Needle
22	1	Dowel Pin
23	1	Ball

Accessory Installation & Adjustment Instructions

Install target as shown, install sensors as shown, adjust for proper end of stroke sensing.



--	--	--	--	--	--	--

GLOBAL SALES CONTACTS

CORPORATE HEADQUARTERS



US
+1-888-DESTACO
+1-248-836-6700
northamerica@destaco.com

THE BEST PRODUCTS.
UNMATCHED SERVICE.
WORLDWIDE.



DE
+49-6171-705-0
europe@destaco.com



SP
+34-936361680
spain@destaco.com



PL
+48-506002115
poland@destaco.com



IN
+91-80-41123421-426
india@destaco.com



MX
mexico@destaco.com



FR
+33-4-7354-5001
france@destaco.com



CN
+86-21-2411-2678
china@destaco.com



NL
+31-297285332
benelux@destaco.com



SG
singapore@destaco.com



UK
+44-1902-797980
uk@destaco.com



TH
+66-2326-0812-6
asia@destaco.com



CZ
+420-603-577-341
czech@destaco.com



CA
canada@destaco.com

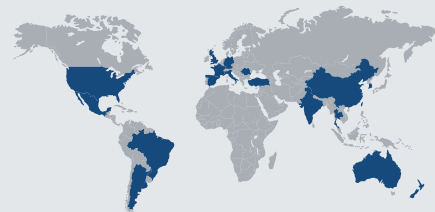


Click or Scan for
the latest PDF version
of this document.

Click or Scan
to learn more
about Stabilus.



Industries



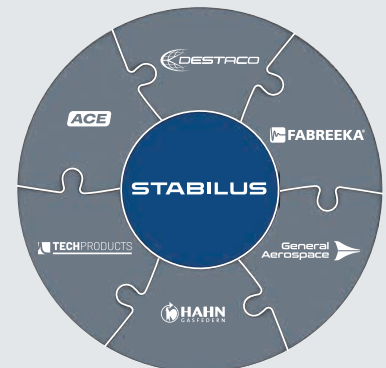
45 Locations in 19 Countries



8K Employees



2024 Revenues



Expert Brands